

RESEARCH BRIEF

INSTITUTIONAL AND PROGRAM PLANNING

VOLUME 6 NUMBER 6

JANUARY 1997

TREND IN FLORIDA COMMUNITY COLLEGE SYSTEMWIDE FTE ENROLLMENT AND NUMBER OF DEGREE GRADUATES COMPARED TO SPJC

This brief is designed to fulfill two goals. The first purpose is to compare the Florida Community College systemwide FTE enrollment (without lifelong learning) to that of St. Petersburg Junior College (SPJC) for the ten year period beginning with reporting year 1986-87 and ending with 1995-96. A reporting year is different from an academic year though it is the basis of FTE funding and the collection of other statistical information at the state level. For example, the reporting year 1995-96 would be equal to Summer 1995, Fall 1995 and Spring 1996. Lifelong learning is not included in the discussion (although shown on the table) since during the ten year period this classification received grant funds for a number of years for non-degree courses plus no funds for students repeating a credit course to raise grades in a previously passed credit course. Currently, only the latter FTE are included in this category; the grant has been eliminated. The second purpose of this brief is to compare the trend in the number of graduates systemwide to that of SPJC. The table on the other side shows the data and graphs that compare the ten year trend in FTE enrollment and degree graduates.

For four (4) years, beginning with 1986-87 and ending with 1989-90, FTE enrollment increased at a level greater than the previous year, at both the systemwide level (from 4.4% to 8.7%) and at SPJC (from 1.4% to 6.9%) although the growth at SPJC was at a slower rate. Then, for the next three (3) years, although the FTE enrollments were increasing, the annual increase was less than the previous year both statewide (from 7.2% to 2.0%) and at SPJC (from 5.4% to 2.2%). Note then, that the trends at both the state level and at SPJC paralleled each other. However, beginning with 1993-94 this was no longer true. Systemwide the percent of change was slightly negative for 1993-94 (-0.7%), slightly positive for 1994-95 (0.1%), and slightly negative for 1995-96 (-0.7%). At SPJC, the percent of change was slightly negative for 1993-94 (-0.3%), decreased sharply in 1994-95 (-5.1%), and continued to be negative (-3.9%) though not so significantly in 1995-96. Current projections for 1996-97 show the state increasing very slightly but SPJC decreasing. These figures will not be finalized until after the submission of the End-of-Fall and Beginning-of-Spring Student Data Base files.

The number of degree graduates systemwide increased over the previous year for eight (8) of the ten (10) years. At SPJC the number of degree graduates increased over the previous year for seven (7) of the ten (10) years. With one exception, whenever the percent of graduates increased statewide there was an increase in degree graduates at SPJC. In 1989-90, however, the percent of graduates increased systemwide by 6.8% over the previous year, while at SPJC there was a 1.0% decrease in degree graduates.

There does not appear to be a relationship between FTE enrollment increases in one year with corresponding increases in the number of graduates two (2), three (3) or four (4) years later. For example, systemwide in 1992-93, the percent of graduates over the preceding year decreased by -0.5%, yet the enrollment two years prior to that in 1990-91 increased by 7.2% over the preceding year, by 8.7% in 1989-90, and in 1988-89 increased by 8.3% over the preceding year. One would expect full-time students beginning in 1990-91 to graduate by 1992-93 and part-time students beginning in 1988-89 to graduate by that same year. At SPJC, the same was true. In 1992-93 there was a -3.3% decrease in the number of graduates over the previous year, yet the enrollment two years before (in 1990-91) showed a 5.4% increase over the previous year, the enrollment three years before showed 6.9% increase, and the enrollment four years before (in 1988-89) showed a 6.5% increase over the previous year.

In conclusion, with one exception in 1994-95, FTE enrollment at SPJC seems to follow the same trend as the systemwide increases and decreases, although the changes at SPJC appear to be more gradual. Changes in the number of degree graduates appear to have no specific relationship to changes in FTE enrollment changes. However, again, with one exception the changes systemwide seem to be reflected at SPJC; when the number of graduates increases statewide the same is true at SPJC.

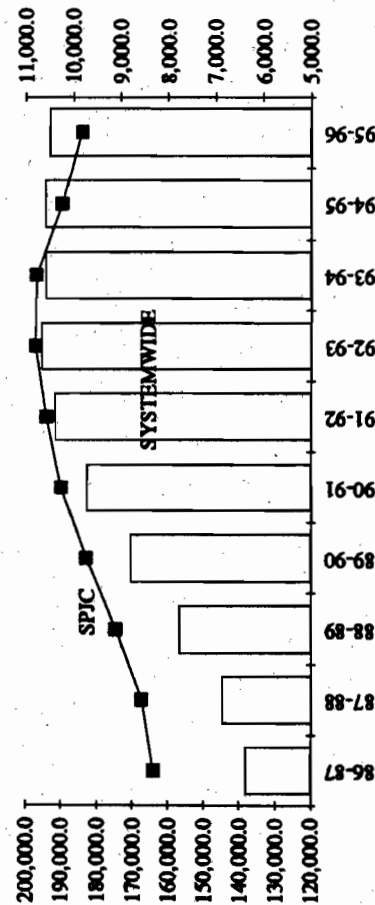
FLORIDA COMMUNITY COLLEGE SYSTEM COMPARED TO SPJC FTE ENROLLMENT AND NUMBER OF A.A. & A.S. GRADUATES

SYSTEMWIDE

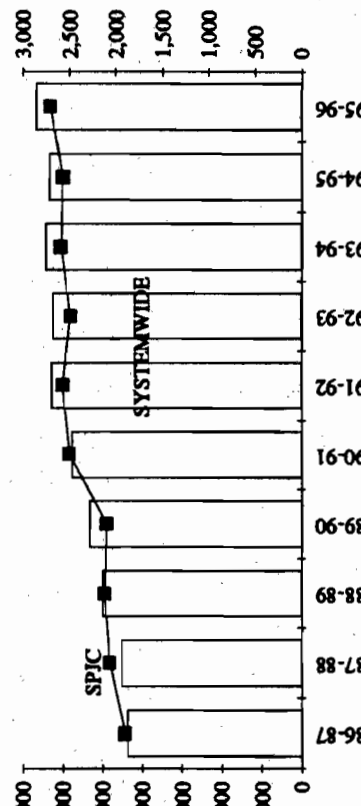
SPJC

YEAR	FTE				GRADUATES				FTE				GRADUATES			
	FTE (w/o LLL)	% Change	FTE (w/LLL)	Total Graduates	AA	AS	Total Graduates	% Change	FTE (w/o LLL)	% Change	FTE (w/LLL)	AA	AS	Total Graduates	% Change	
86-87	138,071.3	4.4	138,141.8	15,213	6,632	21,845	3.4	8,303.9	1.4	8,303.9	1,290	606	1,896	4.0		
87-88	144,829.0	4.9	147,639.0	16,540	6,057	22,597	3.4	8,543.6	2.9	8,586.6	1,439	622	2,061	8.7		
88-89	156,840.5	8.3	NA	18,919	6,068	24,987	10.6	9,096.7	6.5	9,198.3	1,556	560	2,116	2.7		
89-90	170,497.8	8.7	174,444.8	20,287	6,393	26,680	6.8	9,723.0	6.9	9,865.9	1,515	581	2,096	-1.0		
90-91	182,812.6	7.2	186,211.4	22,230	6,690	28,920	8.4	10,250.6	5.4	10,419.1	1,831	668	2,499	19.2		
91-92	191,686.1	4.9	194,442.0	23,845	7,534	31,379	8.5	10,569.5	3.1	10,754.0	1,891	689	2,580	3.2		
92-93	195,529.1	2.0	198,066.7	23,115	8,120	31,235	-0.5	10,797.0	2.2	10,895.1	1,784	711	2,495	-3.3		
93-94	194,257.3	-0.7	195,510.9	22,909	9,183	32,092	2.7	10,768.8	-0.3	10,830.2	1,748	843	2,591	3.8		
94-95	194,418.8	0.1	195,602.9	22,372	9,263	31,635	-1.4	10,223.0	-5.1	10,272.2	1,719	854	2,573	-0.7		
95-96	193,105.4	-0.7	194,191.6	23,730	9,581	33,311	5.3	9,823.8	-3.9	9,871.5	1,879	819	2,698	4.9		

FLORIDA COMMUNITY COLLEGE SYSTEM
COMPARED TO SPJC FTE ENROLLMENT



FLORIDA COMMUNITY COLLEGE SYSTEM
COMPARED TO SPJC A.A. & A.S. COMPLETIONS



Notes: FTE data taken from disk provided by Division of Community College Finance Bureau.
If a discrepancy occurred, SPJC Graduate data was used.
Vocational Certificate figures are not included in this data.

Source: Florida Community College's Factbook (1989-1996)
SPJC Office of Institutional Research 11/7/96