

A.A. PROGRAM REVIEW LEVEL I DATA DISPLAYS A RESEARCH BRIEF

Research Briefs

Research Briefs are short publications prepared by the Department of Institutional Research and Effectiveness (IRE) that are intended to provide relevant information which assists in the performance improvement process used by St. Petersburg College (SPC). Research Brief topics include, but are not limited to, student achievement, state accountability measures, institutional survey results, student enrollment, and faculty/adjunct compensation.

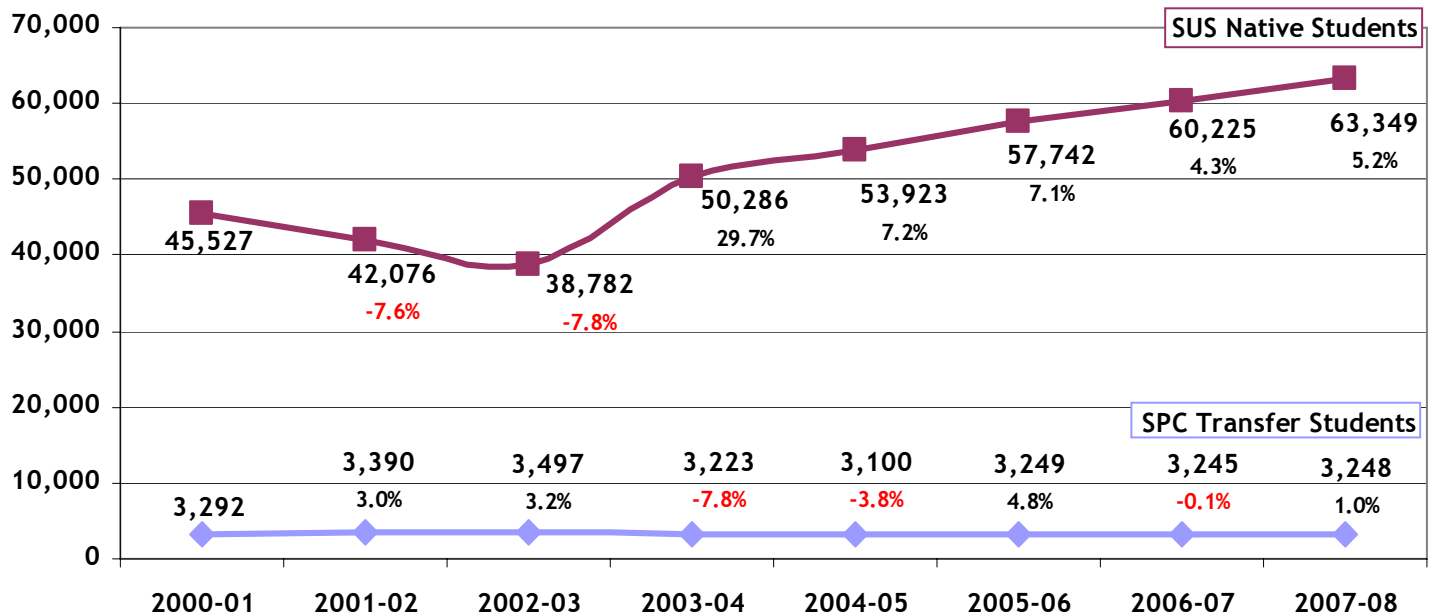
Introduction

The Community College and Technical Center Management Information Systems provided data displays showing the Statewide University System (SUS) upper division performance of community college Associate of Arts (AA) graduates compared with the performance of non-transfer (native) SUS upper division students. SPC transfer students were included regardless of when the AA degree was earned. This brief focused on five reporting years (summer, fall, and spring) of data from 2003-04 through 2007-08.

Results

Figure 1 displays an unduplicated headcount of students classified as upper division who were enrolled in the SUS in a given year. There was a large increase in the number of native students beginning in 2003-04 (29.7%) with year-over-year increases between 4.3% and 7.2% since that time. The number of SPC transfer students did not experience this same trend. SPC began offering upper division programs in 2002-03 with 621 students enrolled the first year, and these programs have experienced significant year-over-year growth since then. The SPC upper division students are not represented in the data displays since these reports focus on the performance of students in the SUS.

Figure 1
 Number of Students in the State University System (Upper Division)

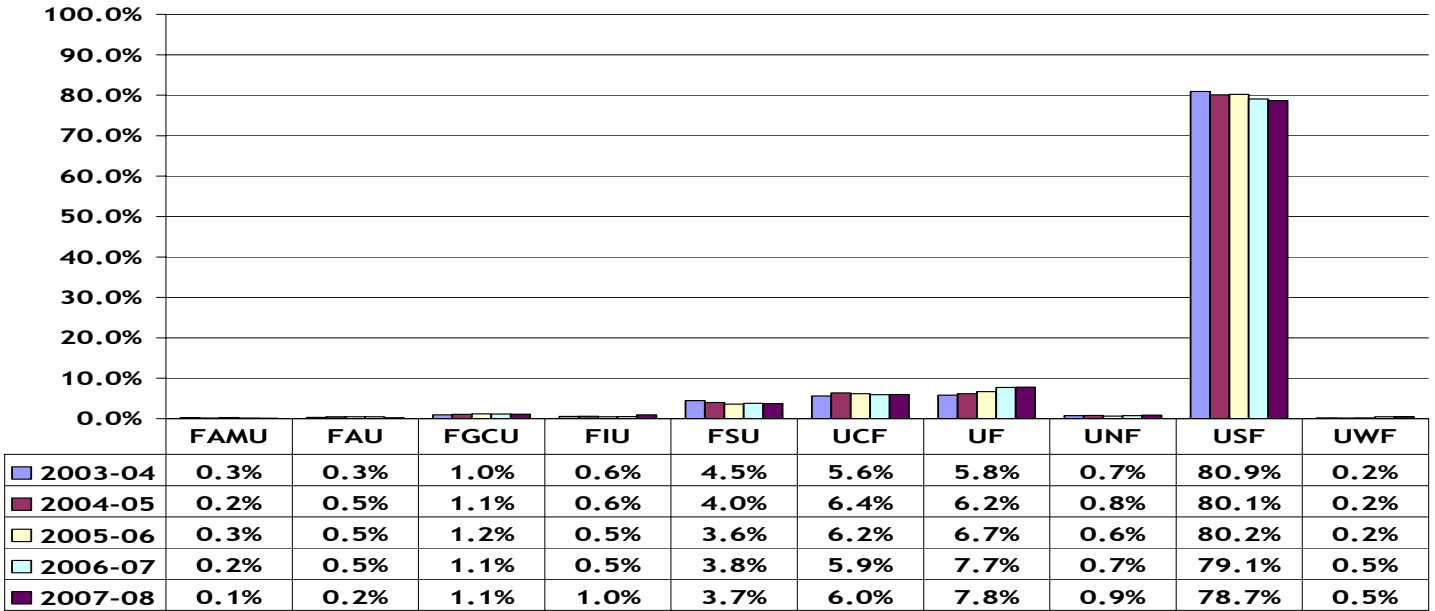


Source: Data provided by the Board of Governors (CC23.ARTIC.FYO708.CCSMRYRP - Overall)

Data were provided on grade point average (GPA), suspensions, graduation rates, average credits earned per term, average credits earned toward a degree, and the average number of credits earned at the university toward the degree by students who graduated during the reporting period. Tables showing detailed information were included in Appendix A (Data Display - Overall Summaries by Year) and Appendix B (Data Display - Overall Summaries by University and Year).

Figure 2 shows the distribution by university of SPC transfer students in the SUS. Since most SPC students transfer to USF, information for USF students is displayed along with the system-wide comparisons, beginning with Figure 4.

Figure 2
 SPC Transfer Students in the SUS (by University)



Source: Data provided by the Board of Governors (CC23.ARTIC.FY0708.LEVIREPT - University; CC23.ARTIC.FY0708.CCSMRYP - Overall)

The mean GPA of SPC transfer students was lower than SUS native students since 2003-04 (Figure 3). In 2004-05, SPC transfer students slightly outperformed USF native students; however, the mean GPA for SPC transfer students has remained lower than that of USF native students since 2005-06 (Figure 4).

Figure 3
Mean GPA (SPC vs. SUS Native Students)

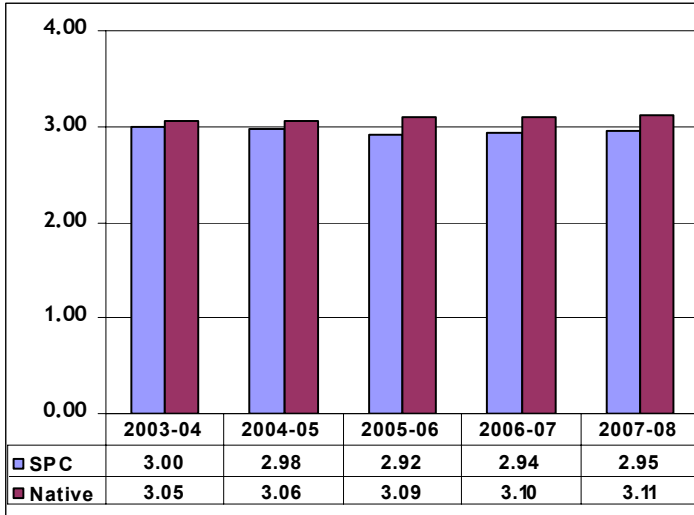
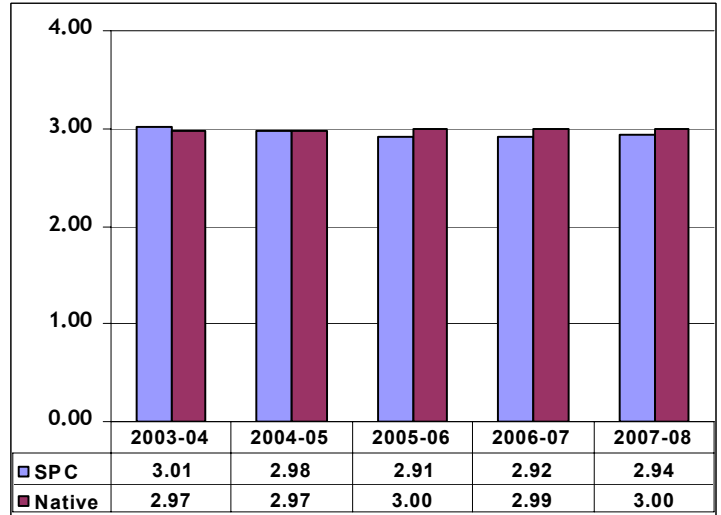


Figure 4
Mean GPA (SPC vs. USF Native Students)



While over fifty percent of SPC transfer students have earned a GPA of 3.0 or higher over the last five years (Figures 5 and 6), this percentage is lower than SUS and USF native students with the exception of SPC transfer students attending USF in 2003-04.

Figure 5
% ≥ 3.0 GPA (SPC vs. SUS Native Students)

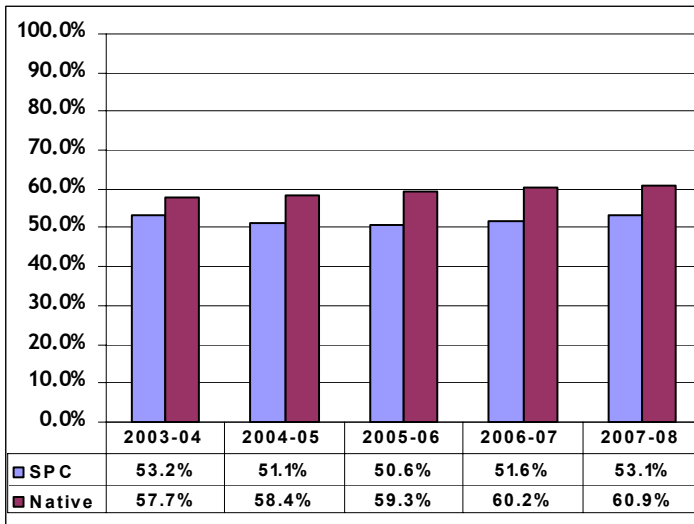
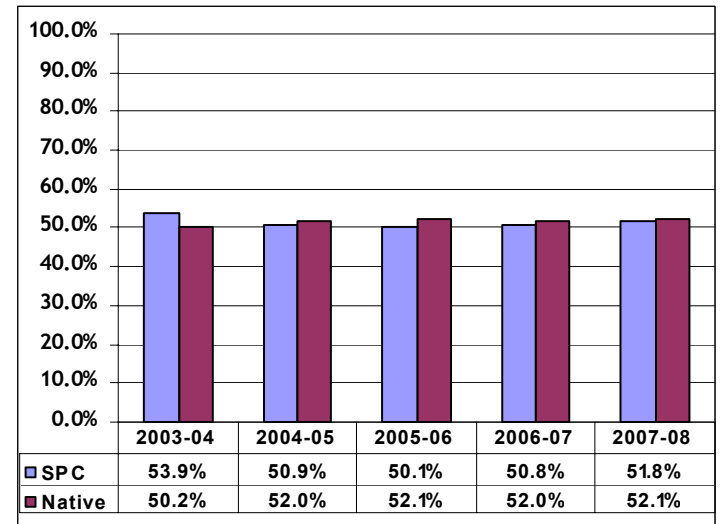


Figure 6
% ≥ 3.0 GPA (SPC vs. USF Native Students)



A.A. Program Review Level I Data Displays

Figures 7 and 8 display the percentage of students who graduated during this reporting period. SUS Native students graduated at higher rates than SPC transfer students (Figure 7). Historically, SPC transfer students had outperformed USF native students; however, recent years show similar rates for both groups (Figure 8).

Figure 7
% Graduated (SPC vs. SUS Native Students)

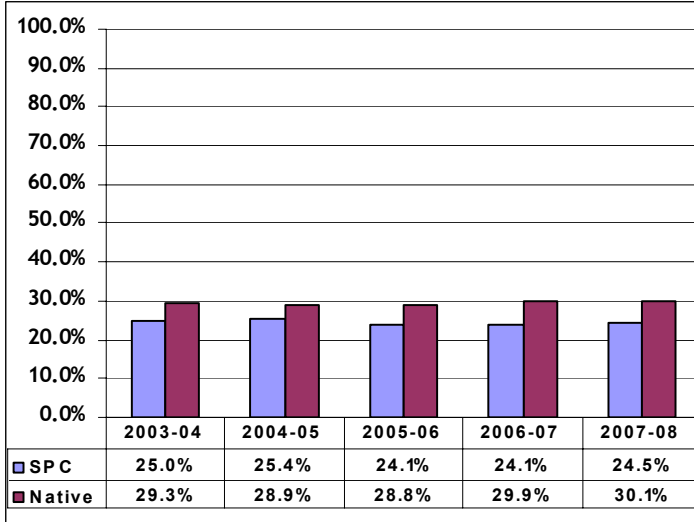
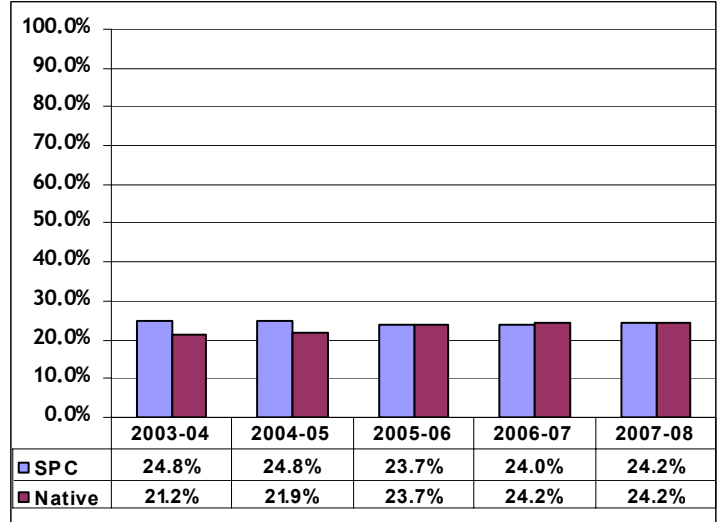


Figure 8
% Graduated (SPC vs. USF Native Students)



Figures 9 and 10 show the comparison of average credit hours per term statewide and at USF. SPC transfer students took fewer credit hours per term than native students in all years statewide and at USF. The average number of credit hours per term was more consistent for SPC transfer students, than for both native student comparison groups during the five-year period displayed.

Figure 9
Average Credit Hours per Term
(SPC vs. SUS Native Students)

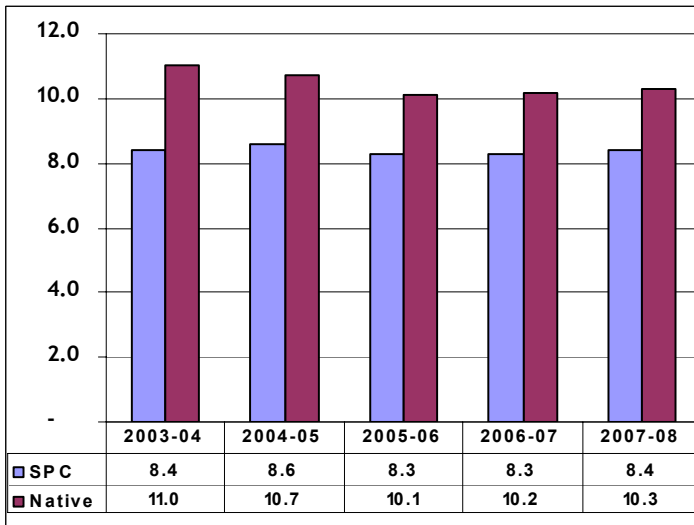


Figure 10
Average Credit Hours per Term
(SPC vs. USF Native Students)

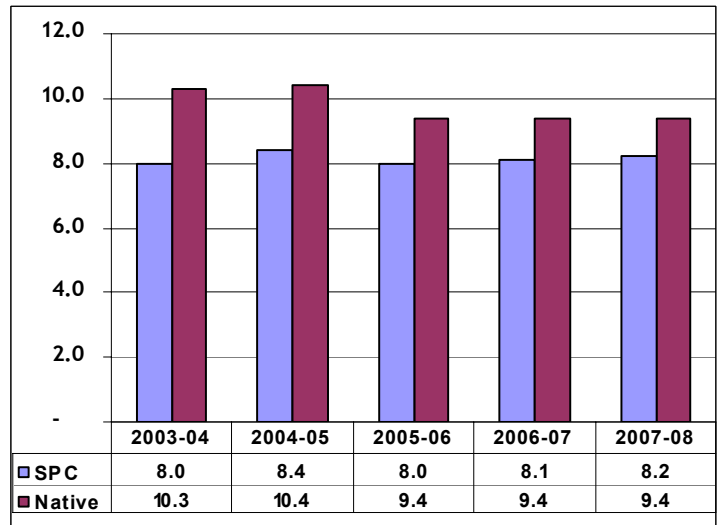


Figure 11 shows the average number of credits earned toward a degree by students who graduated during the reporting period. SPC transfer students earned slightly more credits toward their degrees than SUS native students (2.9 - 4.8). Patterns were similar for USF (Figure 12) where SPC transfer students earned more credits (1.7 - 4.0). Average credits earned at a university are shown in Appendix B.

Figure 11
Average Total Credits to Degree
(SPC vs. SUS Native Students)

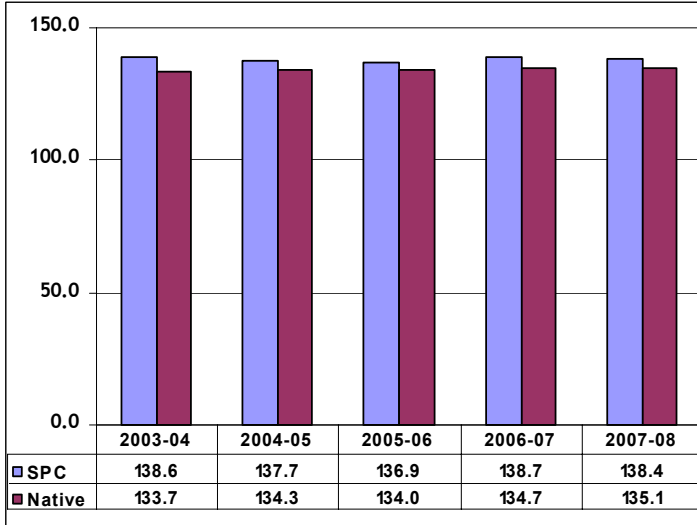
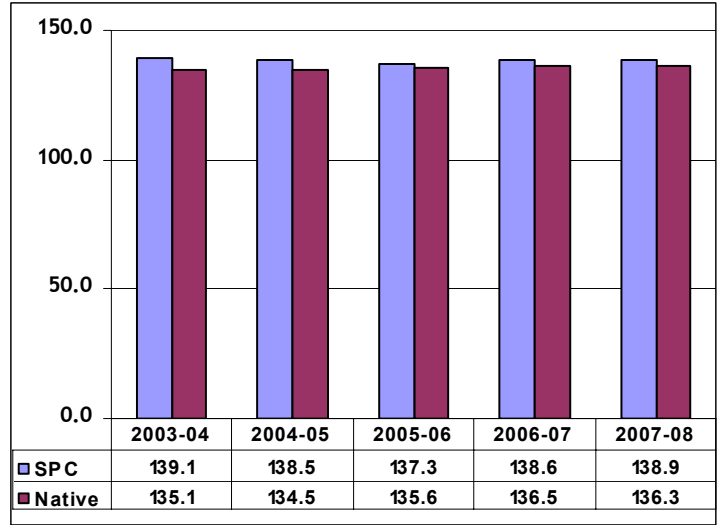


Figure 12
Average Total Credits to Degree
(SPC vs. USF Native Students)



Conclusion

There was a large increase in the number of native students beginning in 2003-04, while the SPC transfer students did not experience this same trend. This may have been impacted by the development of SPC’s upper division programs. While the mean GPA of SPC transfer students was lower than native students, over fifty percent of SPC transfer students earned a GPA of 3.0 or higher. Approximately one in four SPC transfer students continues to graduate from SUS programs. SPC upper division programs are not represented in the data displays since these reports focus on the performance of students in the SUS.

Appendix A Data Display - Overall Summaries by Year

Overall Comparison between SPC and Native Students across the State University System																	
	Unduplicated UD Headcount		Mean GPA		% ≥ 3.0 GPA		% ≤ 2.0 GPA		% Suspended		% Graduated		Avg SSH per term		Avg Total SSH to Degree		Avg SSH at Univ to Degree
	SPC	Native	SPC	Native	SPC	Native	SPC	Native	SPC	Native	SPC	Native	SPC	Native	SPC	Native	SPC
2000-01	3,292	45,527	2.98	3.03	53.0	56.2	8.1	2.3	0.6	0.6	23.6	28.7	8.5	10.9	137.6	133.3	66.3
2001-02	3,390	42,076	2.97	3.01	52.4	54.7	8.7	2.8	0.3	0.9	25.5	28.5	8.5	10.9	139.4	132.8	67.3
2002-03	3,497	38,782	2.92	2.98	50.6	52.6	10.2	2.9	0.5	0.7	10.9	28.2	8.3	10.8	138.6	132.8	70.4
2003-04	3,223	50,286	3.00	3.05	53.2	57.7	7.9	2.1	0.3	0.4	25.0	29.3	8.4	11.0	138.6	133.7	67.1
2004-05	3,100	53,923	2.98	3.06	51.1	58.4	7.8	1.9	0.1	0.2	25.4	28.9	8.6	10.7	137.7	134.3	67.7
2005-06	3,249	57,742	2.92	3.09	50.6	59.3	9.1	2.0	1.4	0.6	24.1	28.8	8.3	10.1	136.9	134.0	65.3
2006-07	3,245	60,225	2.94	3.10	51.6	60.2	8.8	1.9	1.4	0.6	24.1	29.9	8.3	10.2	138.7	134.7	66.4
2007-08	3,248	63,349	2.95	3.11	53.1	60.9	7.9	1.8	1.2	0.5	24.5	30.1	8.4	10.3	138.4	135.1	65.5

Source: Data provided by the Board of Governors (CC23.ARTIC.FY0708.CCSMRYP)

Appendix B Data Display Overall Summaries by University and Year

Summary for 2003-04

	Unduplicated UD Headcount		Mean GPA		% ≥ 3.0 GPA		% ≤ 2.0 GPA		% Suspended		% Graduated		Avg SSH per term		Avg Total SSH to Degree		Avg SSH at Univ to Degree
	SPC	Native	SPC	Native	SPC	Native	SPC	Native	SPC	Native	SPC	Native	SPC	Native	SPC	Native	SPC
FAMU	9	4,727	2.61	2.76	11.1	33.6	22.2	5.2	0.0	1.4	44.4	24.7	10.2	10.9	153.3	137.0	99.0
FAU	10	2,586	2.75	2.86	30.0	41.5	10.0	4.3	0.0	0.7	9.9	26.0	9.8	9.6	163.0	131.6	91.0
FGCU	31	638	3.35	3.12	83.8	63.0	9.6	0.5	0.0	0.0	16.2	18.6	7.5	9.9	154.6	127.9	44.2
FIU	19	5,528	3.06	2.95	47.5	51.0	10.6	2.7	0.0	0.8	15.7	24.0	8.8	9.9	125.3	135.6	65.3
FSU	145	8,145	2.87	3.01	44.0	54.6	7.7	2.2	2.8	1.0	30.4	30.7	10.2	11.8	132.9	131.1	65.0
UCF	182	5,481	2.98	3.11	49.4	61.5	10.3	1.4	4.9	0.7	25.2	26.0	9.5	11.3	140.8	130.5	68.8
UF	187	14,901	2.99	3.25	54.0	74.6	5.2	0.6	1.1	0.2	27.1	37.3	9.8	11.6	136.0	134.8	72.5
UNF	24	1,626	2.94	2.97	54.2	50.2	8.3	2.0	4.2	1.0	25.0	24.4	9.5	10.6	122.8	128.3	62.3
USF	2,609	5,558	3.01	2.97	53.9	50.2	7.8	2.7	0.0	0.0	24.8	21.2	8.0	10.3	139.1	135.1	66.6
UWF	7	1,096	2.66	3.07	14.1	59.8	0.0	2.4	0.0	0.3	57.3	28.8	11.1	10.0	137.0	139.3	72.0
OVERALL	3,223	50,286	3.00	3.05	53.2	57.7	7.9	2.1	0.3	0.4	25.0	29.3	8.4	11.0	138.6	133.7	67.1

Source: Data provided by the Board of Governors (CC23.ARTIC.FYO304.LEVIREPT - University; CC23.ARTIC.FYO304.CCSMRYP - Overall)

Summary for 2004-05

	Unduplicated UD Headcount		Mean GPA		% ≥ 3.0 GPA		% ≤ 2.0 GPA		% Suspended		% Graduated		Avg SSH per term		Avg Total SSH to Degree		Avg SSH at Univ to Degree
	SPC	Native	SPC	Native	SPC	Native	SPC	Native	SPC	Native	SPC	Native	SPC	Native	SPC	Native	SPC
FAMU	6	3,675	2.48	2.80	16.7	33.2	33.3	3.9	0.0	0.3	0.0	21.8	6.8	9.8	0.0	143.7	0.0
FAU	14	2,708	2.73	2.85	42.9	40.2	14.3	4.1	0.0	1.0	0.0	25.2	9.6	9.5	0.0	130.8	0.0
FGCU	33	975	3.37	3.13	66.6	62.6	5.9	1.0	0.0	0.2	24.2	22.8	8.8	9.8	133.4	126.7	53.1
FIU	19	6,577	3.13	2.97	63.4	51.5	5.5	3.2	0.0	0.0	21.1	22.1	7.3	8.9	132.8	139.5	69.8
FSU	124	8,314	2.92	3.03	45.3	56.0	4.8	2.2	0.7	0.8	34.7	32.6	10.3	11.7	132.9	131.4	68.2
UCF	198	7,448	2.95	3.07	49.0	58.0	7.6	1.5	2.6	0.4	27.3	27.4	9.4	10.9	139.5	131.7	90.1
UF	191	14,993	2.98	3.27	58.3	75.8	6.8	0.5	1.1	0.1	25.6	36.5	9.6	11.6	132.9	135.0	71.6
UNF	25	1,858	3.00	2.98	51.9	49.9	15.9	1.5	4.1	0.3	28.0	27.2	10.2	10.4	125.6	127.2	65.7
USF	2,484	6,180	2.98	2.97	50.9	52.0	8.0	3.0	0.0	0.0	24.8	21.9	8.4	10.4	138.5	134.5	65.5
UWF	6	1,195	2.77	3.07	16.7	59.1	0.0	2.2	0.0	0.1	50.0	28.3	9.5	10.1	145.0	140.7	82.7
OVERALL	3,100	53,923	2.98	3.06	51.1	58.4	7.8	1.9	0.1	0.2	25.4	28.9	8.6	10.7	137.7	134.3	67.7

Source: Data provided by the Board of Governors (CC23.ARTIC.FYO405.LEVIREPT - University; CC23.ARTIC.FYO405.CCSMRYP - Overall)

A.A. Program Review Level I Data Displays

Summary for 2005-06

	Unduplicated UD Headcount		Mean GPA		% ≥ 3.0 GPA		% ≤ 2.0 GPA		% Suspended		% Graduated		Avg SSH per term		Avg Total SSH to Degree		Avg SSH at Univ to Degree
	SPC	Native	SPC	Native	SPC	Native	SPC	Native	SPC	Native	SPC	Native	SPC	Native	SPC	Native	SPC
FAMU	9	3,419	2.72	2.85	33.0	36.6	11.1	2.6	0.0	0.0	0.0	17.9	8.9	10.0	0.0	138.5	0.0
FAU	15	2,986	2.92	2.85	60.0	39.7	13.3	4.9	0.0	1.7	20.0	23.5	9.5	9.2	124.0	129.2	56.0
FGCU	39	1,183	3.20	3.12	69.2	62.9	5.1	1.4	2.6	0.6	17.9	24.0	7.4	9.8	135.7	126.7	51.1
FIU	15	7,098	3.01	2.94	60.0	48.5	6.7	4.0	0.0	0.0	13.3	23.7	6.0	8.6	132.5	136.1	70.0
FSU	117	9,035	2.94	3.07	48.7	57.8	6.8	2.3	2.6	1.5	29.1	32.7	9.7	10.8	139.1	131.7	72.0
UCF	201	8,137	2.87	3.08	44.3	58.4	10.0	1.4	5.0	0.6	30.5	29.4	9.4	10.2	138.1	132.1	65.3
UF	218	15,545	3.06	3.33	60.1	78.1	6.9	0.6	1.8	0.2	24.8	34.8	9.4	11.0	132.4	135.6	69.8
UNF	21	2,027	3.04	3.05	61.9	54.3	10.5	1.0	10.5	0.7	21.1	26.6	11.1	9.6	127.3	128.0	72.8
USF	2,607	6,951	2.91	3.00	50.1	52.1	9.4	2.5	1.0	0.9	23.7	23.7	8.0	9.4	137.3	135.6	64.7
UWF	7	1,361	2.72	3.08	28.6	58.1	14.3	2.0	0.0	0.4	0.0	28.3	8.6	9.6	0.0	139.7	0.0
OVERALL	3,249	57,742	2.92	3.09	50.6	59.3	9.1	2.0	1.4	0.6	24.1	28.8	8.3	10.1	136.9	134.0	65.3

Source: Data provided by the Board of Governors (CC23.ARTIC.FY0708.LEVIREPT - University; CC23.ARTIC.FY0708.CCSMRYP - Overall)

Summary for 2006-07

	Unduplicated UD Headcount		Mean GPA		% ≥ 3.0 GPA		% ≤ 2.0 GPA		% Suspended		% Graduated		Avg SSH per term		Avg Total SSH to Degree		Avg SSH at Univ to Degree
	SPC	Native	SPC	Native	SPC	Native	SPC	Native	SPC	Native	SPC	Native	SPC	Native	SPC	Native	SPC
FAMU	5	3,380	3.27	2.80	80.0	33.3	0.0	4.1	0.0	0.0	40.0	25.2	10.1	10.8	132.0	136.6	52.5
FAU	15	3,229	2.76	2.85	33.3	40.0	20.0	4.8	6.7	1.1	46.7	23.3	9.6	9.4	144.3	130.0	68.3
FGCU	37	1,401	3.24	3.12	75.7	63.0	2.7	1.1	0.0	0.4	18.9	24.6	5.3	10.0	130.2	128.6	57.9
FIU	17	7,831	2.92	2.97	58.8	50.8	5.9	3.3	0.0	0.0	23.5	25.8	8.6	8.8	122.5	136.7	62.5
FSU	124	9,339	2.95	3.09	48.4	59.8	8.9	1.9	4.0	1.2	23.4	32.5	8.9	10.8	133.4	131.7	63.2
UCF	192	8,299	2.85	3.08	44.7	58.6	12.1	1.5	4.7	0.7	26.3	30.8	9.3	10.2	155.7	133.9	71.6
UF	250	16,304	3.07	3.35	62.4	79.5	5.6	0.5	0.4	0.2	22.8	35.8	9.5	11.2	129.7	136.3	67.8
UNF	24	2,057	3.00	3.07	50.0	55.6	0.0	0.0	4.2	1.6	33.3	27.4	9.9	9.8	132.6	128.1	75.8
USF	2,566	6,958	2.92	2.99	50.8	52.0	9.0	2.8	1.1	1.0	24.0	24.2	8.1	9.4	138.6	136.5	66.0
UWF	15	1,427	2.92	3.07	46.7	58.9	6.7	2.4	0.0	0.7	20.0	27.1	8.4	9.4	136.3	141.2	69.3
OVERALL	3,245	60,225	2.94	3.10	51.6	60.2	8.8	1.9	1.4	0.6	24.1	29.9	8.3	10.2	138.7	134.7	66.4

Source: Data provided by the Board of Governors (CC23.ARTIC.FY0708.LEVIREPT - University; CC23.ARTIC.FY0708.CCSMRYP - Overall)

Summary for 2007-08

	Unduplicated UD Headcount		Mean GPA		% ≥ 3.0 GPA		% ≤ 2.0 GPA		% Suspended		% Graduated		Avg SSH per term		Avg Total SSH to Degree		Avg SSH at Univ to Degree
	SPC	Native	SPC	Native	SPC	Native	SPC	Native	SPC	Native	SPC	Native	SPC	Native	SPC	Native	SPC
FAMU	4	3,415	2.95	2.79	50.0	32.1	0.0	3.9	0.0	0.0	25.0	29.5	12.6	10.4	127.0	140.2	54.0
FAU	8	3,352	2.63	2.87	25.0	41.3	12.5	4.1	0.0	0.7	25.0	23.5	8.4	9.4	141.5	131.3	61.5
FGCU	36	1,698	3.25	3.12	80.6	63.3	8.3	1.5	0.0	0.5	11.1	26.0	7.1	9.6	122.5	128.4	56.3
FIU	31	8,501	2.95	2.98	58.1	51.5	9.7	3.0	0.0	0.0	9.7	26.1	8.1	9.0	133.0	136.7	74.7
FSU	121	9,657	2.94	3.10	47.9	60.5	8.3	1.9	5.0	1.1	31.4	33.5	9.6	10.8	137.5	131.7	68.7
UCF	195	8,717	2.98	3.11	54.5	59.4	8.4	1.5	3.7	0.7	23.0	31.3	9.2	10.4	147.6	132.8	68.2
UF	253	16,876	3.10	3.36	64.8	81.0	5.1	0.5	1.2	0.1	29.2	34.9	9.3	11.2	130.8	137.2	65.8
UNF	28	2,334	3.03	3.05	57.7	54.3	0.0	0.4	0.0	1.0	23.1	25.5	10.3	10.0	118.0	128.8	58.0
USF	2,556	7,232	2.94	3.00	51.8	52.1	8.1	2.4	0.9	1.1	24.2	24.2	8.2	9.4	138.9	136.3	65.1
UWF	16	1,567	2.88	3.09	37.5	60.4	12.5	2.4	0.0	0.8	31.3	26.7	7.7	9.6	152.6	143.4	77.2
OVERALL	3,248	63,349	2.95	3.11	53.1	60.9	7.9	1.8	1.2	0.5	24.5	30.1	8.4	10.3	138.4	135.1	65.5

Source: Board of Governors (CC23.ARTIC.FYO708.LEVIREPT - University; CC23.ARTIC.FYO708.CCSMRYRP - Overall)