

St. Petersburg College

SPC



This document and any reproduction are the property and copyright of EMO ARCHITECTS, INC. and may not be reproduced, published or used in any manner without the written permission of the Architect.
Copyright © 2012 EMO
_EMO_Project Number E141.10
23 May 2012

EMO
ARCHITECTS, INC.

TARPON SPRINGS CAMPUS

ILLUSTRATIVE MASTER PLAN

23 May 2012

This document and any reproduction are the property and copyright of EMO/ARCHITECTS, INC. and may not be reproduced, published or used in any manner without the written permission of the Architect.

Copyright © 2012 EMO
EMO Project Number: E141.10
23 May 2012

St. Petersburg College

SPC

TARPON SPRINGS CAMPUS ILLUSTRATIVE MASTER PLAN

OVERVIEW



This document and any reproduction are the property and copyright of EMO/ARCHITECTS, INC. and may not be reproduced, published or used in any manner without the written permission of the Architect.
Copyright © 2012 EMO
EMO Project Number: E141.10
23 May 2012

St. Petersburg College

SPC

TARPON SPRINGS CAMPUS ILLUSTRATIVE MASTER PLAN

CAMPUS IDENTITY & FRONT DOOR



This document and any reproduction are the property and copyright of EMO/ARCHITECTS, INC. and may not be reproduced, published or used in any manner without the written permission of the Architect.

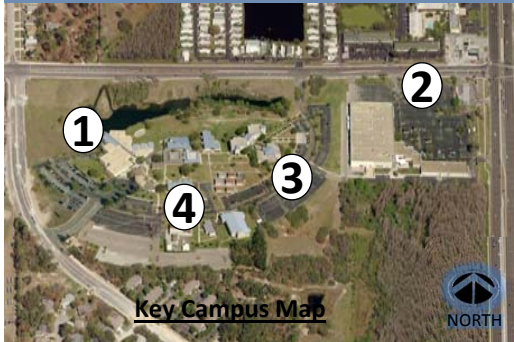
Copyright © 2012 EMO
EMO Project Number: E141.10
23 May 2012

St. Petersburg College

SPC

TARPON SPRINGS CAMPUS ILLUSTRATIVE MASTER PLAN

MATERIAL PALATE



Material Palate

The Tarpon Springs campus buildings are defined by common material and color palettes which include white stucco walls, white painted concrete frames, metal trim and (in certain buildings) light blue metal roofs. This visually unifies the campus, while referencing a palette that recalls the Greek origins of the Tarpon Springs community. With the exception of the portables, this common material palette unifies the campus despite the varying budgets and quality of the individual structures.

This document and any reproduction are the property and copyright of EMO/ARCHITECTS, INC. and may not be reproduced, published or used in any manner without the written permission of the Architect.
Copyright © 2012 EMO
EMO Project Number: E141.10
23 May 2012

St. Petersburg College

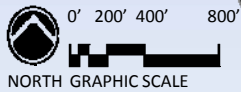


TARPON SPRINGS CAMPUS ILLUSTRATIVE MASTER PLAN

AERIAL VIEW OF EXISTING CAMPUS



Key Campus Map



St. Petersburg College



TARPON SPRINGS CAMPUS ILLUSTRATIVE MASTER PLAN

SITE ANALYSIS

This document and any reproduction are the property and copyright of EMO/ARCHITECTS, INC. and may not be reproduced, published or used in any manner without the written permission of the Architect.

Copyright © 2012 EMO
EMO Project Number: E141.10
23 May 2012

- New or existing buildings to remain
- Existing buildings to be renovated or updated (DE, CE, OL, BK, FS, FA, AD)
- Existing buildings to be demolished (AG, CS, BE, AL, GA, EP, NU, ZE, EI, LA, OM, TA, RH, IO, KA, TH)



TARPON SPRINGS BUILDING CODES

AD – Administration	KA – Kappa
AG – Agora	LA – Lambda
AL – Alpha	LY – Lyceum
BE – Beta	MA – Maintenance
BK – Bookstore/Food Services	NU – Nu Tech
CE – Bilirakis College of Education	OL – Olympia
CS – Computer Support	OM – Omicron
DE – Delta	PE – Physical Education
EP – Epsilon	PP – Performance Platform
ET – Eta	RH – Rho
FA – Leepa Rattner Museum of Art	SI – Sigma
FS – Food Service	TA – Tau
GA – Gamma	TH – Theta – Storage
IO – Iota	ZE – Zeta



St. Petersburg College

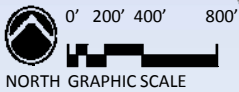


TARPON SPRINGS CAMPUS ILLUSTRATIVE MASTER PLAN
EXISTING FACILITY SQUARE FOOTAGE SUMMARY

This document and any reproduction are the property and copyright of EMO/ARCHITECTS, INC. and may not be reproduced, published or used in any manner without the written permission of the Architect.
Copyright © 2012 EMO
EMO Project Number E141.10
23 May 2012

- New or existing buildings to remain
- Existing buildings to be renovated or updated (DE, CE, OL, BK, FS, FA, AD)
- Existing buildings to be demolished (AG, CS, BE, AL, GA, EP, NU, ZE, EI, LA, OM, TA, RH, IO, KA, TH)

Key Campus Map



Official Bldg. No.	Existing Buildings	Year Built	Year(s) Renovated	SF of Buildings to Remain	SF of Buildings to be Updated or Renovated	SF of Buildings to be Demolished	
93	AD Administration	1995		13,374			
84	AG Agora (Student Activities//Lounge)					6,264	
85	AL Alpha					1,897	
86	BE Beta					2,545	
Part of 97	BK Bookstore/Food services		2011		Part of-OL		
92	CE Bilirakis College of Education	2002			11,138		
95	CP Chiller Plant			1,465			
Part of 84	CS Computer Science					Part of-AG	
88	DE Delta	2003			8,538		
91	EP Epsilon					4,073	
110	ET Eta					768	
96	FA Leepa-Rattner Museum of Art and Michael M. Bennett Library	2002		57,245			
Part of 97	FS Food Service		2011		Part of-OL		
87	GA Gamma					4,155	
105	IO Iota					864	
111	KA Kappa					864	
112	LA Lambda					768	
94	LY Lyceum	1995		31,216			
89	MA Maintenance	1977		5,367			
83	NU Nu Tech					5,253	
97	OL Olympia		2011		147,409		
114	OM Omicron					864	
90	PE Physical Education	1980			2,679		
-	PP Performance Platform				0		
107	RH Rho					864	
99	SI Sigma	2005			8,172		
100	TA Tau					864	
98	TH Theta - storage					210	
109	ZE Zeta					768	
SF Subtotals =					108,667	177,936	31,021
Total Existing SF of Campus =				317,624			

This document and any reproduction are the property and copyright of EMO/ARCHITECTS, INC. and may not be reproduced, published or used in any manner without the written permission of the Architect.
 Copyright © 2012 EMO
 EMO Project Number E141.10
 23 May 2012

St. Petersburg College



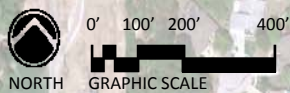
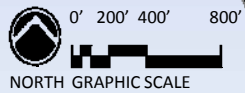
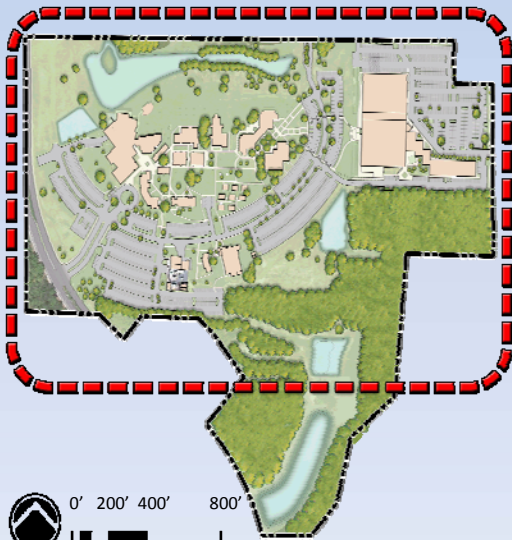
TARPON SPRINGS CAMPUS ILLUSTRATIVE MASTER PLAN

EXISTING CONDITIONS

EXISTING CONDITIONS

- PHASE 1
- PHASE 2
- PHASE 3
- PHASE 4
- PHASE 5

Key Campus Map



St. Petersburg College



TARPON SPRINGS CAMPUS ILLUSTRATIVE MASTER PLAN

PHASE 1A

This document and any reproduction are the property and copyright of EMO/ARCHITECTS, INC. and may not be reproduced, published or used in any manner without the written permission of the Architect.

Copyright © 2012 EMO
EMO Project Number: E141.10
23 May 2012

EXISTING CONDITIONS

- PHASE 1
- PHASE 2
- PHASE 3
- PHASE 4
- PHASE 5

- Demolish existing portable buildings, Zeta portable (ZE), Eta portable (ET), Lambda portable (LA), Omicron portable (OM), Tau portable (TA), Rho portable (RH), Iota portable (IO), Kappa portable (KA)
- Construct new 54,500 Gross SF Library/Learning Commons/Classroom building at portables location (NB-1)
- Remodel 11,400 SF at old Library at Leepa Rattner Museum of Art (FA), relocate Humanities, Fine Arts, MIRA to FA



This document and any reproduction are the property and copyright of EMO/ARCHITECTS, INC. and may not be reproduced, published or used in any manner without the written permission of the Architect.

Copyright © 2012 EMO
EMO Project Number: E141.10
23 May 2012

St. Petersburg College



TARPON SPRINGS CAMPUS ILLUSTRATIVE MASTER PLAN

PHASE 1B

EXISTING CONDITIONS

- PHASE 1
- PHASE 2
- PHASE 3
- PHASE 4
- PHASE 5

- Demolish existing portable buildings, Zeta portable (ZE), Eta portable (ET), Lambda portable (LA), Omicron portable (OM), Tau portable (TA), Rho portable (RH), Iota portable (IO), Kappa portable (KA)
- Construct new **54,500 Gross SF** Library/Learning Commons/Classroom building at portables location (NB-1)
- Remodel 11,400 SF at old Library at Leepa Rattner Museum of Art (FA), relocate Humanities, Fine Arts, MIRA to FA



St. Petersburg College



TARPON SPRINGS CAMPUS ILLUSTRATIVE MASTER PLAN

PHASE 1C

This document and any reproduction are the property and copyright of EMO/ARCHITECTS, INC. and may not be reproduced, published or used in any manner without the written permission of the Architect.

Copyright © 2012 EMO
EMO Project Number: E141.10
23 May 2012

EXISTING CONDITIONS

- PHASE 1
- PHASE 2
- PHASE 3
- PHASE 4
- PHASE 5

- Demolish existing portable buildings, Zeta portable (ZE), Eta portable (ET), Lambda portable (LA), Omicron portable (OM), Tau portable (TA), Rho portable (RH), Iota portable (IO), Kappa portable (KA)
- Construct new 54,500 Gross SF Library/Learning Commons/Classroom building at portables location (NB-1)
- Remodel 11,400 SF at old Library at Leepa Rattner Museum of Art (FA), relocate Humanities, Fine Arts, MIRA to FA



This document and any reproduction are the property and copyright of EMO/ARCHITECTS, INC. and may not be reproduced, published or used in any manner without the written permission of the Architect.

Copyright © 2012 EMO
EMO Project Number: E141.10
23 May 2012

St. Petersburg College



TARPON SPRINGS CAMPUS ILLUSTRATIVE MASTER PLAN

PHASE 2A

EXISTING CONDITIONS

- PHASE 1
- PHASE 2
- PHASE 3
- PHASE 4
- PHASE 5

- Demolish existing Nu Tech (NU)
- Construct new 28,510 Gross SF Math/Science building (NB-2)
- Demolish existing Gamma building (GA), and Epsilon building (EP), Construct new 6,750 Gross SF Science Lab addition adjacent to Sigma building (SI) (NB-3)



This document and any reproduction are the property and copyright of EMO/ARCHITECTS, INC. and may not be reproduced, published or used in any manner without the written permission of the Architect.

Copyright © 2012 EMO
EMO Project Number: E141.10
23 May 2012

St. Petersburg College



TARPON SPRINGS CAMPUS ILLUSTRATIVE MASTER PLAN

PHASE 2B

EXISTING CONDITIONS

- PHASE 1
- PHASE 2
- PHASE 3
- PHASE 4
- PHASE 5

- Demolish existing Nu Tech (NU)
- Construct new **28,510 Gross SF Math/Science building (NB-2)**
- Demolish existing Gamma building (GA), and Epsilon building (EP), Construct new 6,750 Gross SF Science Lab addition adjacent to Sigma building (SI) (NB-3)



St. Petersburg College



TARPON SPRINGS CAMPUS ILLUSTRATIVE MASTER PLAN

PHASE 2C

This document and any reproduction are the property and copyright of EMO/ARCHITECTS, INC. and may not be reproduced, published or used in any manner without the written permission of the Architect.

Copyright © 2012 EMO
EMO Project Number: E141.10
23 May 2012

EXISTING CONDITIONS

- PHASE 1
- PHASE 2
- PHASE 3
- PHASE 4
- PHASE 5

- Demolish existing Nu Tech (NU)
- Construct new 28,510 Gross SF Math/Science building (NB-2)
- Demolish existing Gamma building (GA), and Epsilon building (EP), Construct new 6,750 Gross SF Science Lab addition adjacent to Sigma building (SI) (NB-3)



This document and any reproduction are the property and copyright of EMO/ARCHITECTS, INC. and may not be reproduced, published or used in any manner without the written permission of the Architect.

Copyright © 2012 EMO
EMO Project Number: E141.10
23 May 2012

St. Petersburg College



TARPON SPRINGS CAMPUS ILLUSTRATIVE MASTER PLAN

PHASE 3A

EXISTING CONDITIONS

- PHASE 1
- PHASE 2
- PHASE 3
- PHASE 4
- PHASE 5

- Redevelop parking at northeast corner of campus, add additional drive at south of campus and appropriate parking lot spaces throughout campus
- Remodel 53,046 SF of first floor of College of Education Building (BB-old OL) relocate Administration (AD), College of Business, Emergency Medical Services, and vocational ed. Program to first floor of BB. BB to become new Campus Front Door including redesign of vehicular and pedestrian traffic flow for new campus front door
- Remodel (AD), relocate Student Life Leadership and Computer Support to (AD)
- Demolish existing Agora building (AG), used as Student Life Leadership, Computer Support building (CS)



This document and any reproduction are the property and copyright of EMO/ARCHITECTS, INC. and may not be reproduced, published or used in any manner without the written permission of the Architect.

Copyright © 2012 EMO
EMO Project Number: E141.10
23 May 2012

St. Petersburg College



TARPON SPRINGS CAMPUS ILLUSTRATIVE MASTER PLAN

PHASE 3B

EXISTING CONDITIONS

- PHASE 1
- PHASE 2
- PHASE 3
- PHASE 4
- PHASE 5

- Redevelop parking at northeast corner of campus, add additional drive at south of campus and appropriate parking lot spaces throughout campus
- Remodel 53,046 SF of first floor of College of Education Building (BB-old OL) relocate Administration (AD), College of Business, Emergency Medical Services, and vocational ed. Program to first floor of BB. BB to become new Campus Front Door including redesign of vehicular and pedestrian traffic flow for new campus front door
- Remodel (AD), relocate Student Life Leadership and Computer Support to (AD)
- Demolish existing Agora building (AG), used as Student Life Leadership, Computer Support building (CS)



This document and any reproduction are the property and copyright of EMO/ARCHITECTS, INC. and may not be reproduced, published or used in any manner without the written permission of the Architect.

Copyright © 2012 EMO
EMO Project Number: E141.10
23 May 2012

St. Petersburg College



TARPON SPRINGS CAMPUS ILLUSTRATIVE MASTER PLAN

PHASE 3C

EXISTING CONDITIONS

- PHASE 1
- PHASE 2
- PHASE 3
- PHASE 4
- PHASE 5

- Redevelop parking at northeast corner of campus, add additional drive at south of campus and appropriate parking lot spaces throughout campus
- Remodel 53,046 SF of first floor of College of Education Building (BB-old OL) relocate Administration (AD), College of Business, Emergency Medical Services, and vocational ed. Program to first floor of BB. BB to become new Campus Front Door including redesign of vehicular and pedestrian traffic flow for new campus front door
- Remodel (AD), relocate Student Life Leadership and Computer Support to (AD)
- Demolish existing Agora building (AG), used as Student Life Leadership, Computer Support building (CS)



This document and any reproduction are the property and copyright of EMO/ARCHITECTS, INC. and may not be reproduced, published or used in any manner without the written permission of the Architect.

Copyright © 2012 EMO
EMO Project Number: E141.10
23 May 2012

St. Petersburg College

SPC

TARPON SPRINGS CAMPUS ILLUSTRATIVE MASTER PLAN

PHASE 3D

EXISTING CONDITIONS

- PHASE 1
- PHASE 2
- PHASE 3
- PHASE 4
- PHASE 5

- Redevelop parking at northeast corner of campus, add additional drive at south of campus and appropriate parking lot spaces throughout campus
- Remodel 53,046 SF of first floor of College of Education Building (BB-old OL) relocate Administration (AD), College of Business, Emergency Medical Services, and vocational ed. Program to first floor of BB. BB to become new Campus Front Door including redesign of vehicular and pedestrian traffic flow for new campus front door
- Remodel (AD), relocate Student Life Leadership and Computer Support to (AD)
- Demolish existing Agora building (AG), used as Student Life Leadership, Computer Support building (CS)



St. Petersburg College



TARPON SPRINGS CAMPUS ILLUSTRATIVE MASTER PLAN

PHASE 4A

This document and any reproduction are the property and copyright of EMO/ARCHITECTS, INC. and may not be reproduced, published or used in any manner without the written permission of the Architect.

Copyright © 2012 EMO
EMO Project Number: E141.10
23 May 2012

EXISTING CONDITIONS

- PHASE 1
- PHASE 2
- PHASE 3
- PHASE 4
- PHASE 5

- Demolish existing Beta building (BE), Alpha building (AL), Theta building (TH)



St. Petersburg College



TARPON SPRINGS CAMPUS ILLUSTRATIVE MASTER PLAN

PHASE 5A

This document and any reproduction are the property and copyright of EMO/ARCHITECTS, INC. and may not be reproduced, published or used in any manner without the written permission of the Architect.

Copyright © 2012 EMO
EMO Project Number: E141.10
23 May 2012

EXISTING CONDITIONS

- PHASE 1
- PHASE 2
- PHASE 3
- PHASE 4
- PHASE 5

- Construct new classroom building at AG/CS Site (NB-4)
- Construct new 9,500 Gross SF FA Auditorium addition (500 seats) @ southwest side of FA (NB-5)



St. Petersburg College



TARPON SPRINGS CAMPUS ILLUSTRATIVE MASTER PLAN

PHASE 5B

This document and any reproduction are the property and copyright of EMO/ARCHITECTS, INC. and may not be reproduced, published or used in any manner without the written permission of the Architect.

Copyright © 2012 EMO
EMO Project Number: E141.10
23 May 2012

EXISTING CONDITIONS

- PHASE 1
- PHASE 2
- PHASE 3
- PHASE 4
- PHASE 5

- Construct new classroom building at AG/CS Site (NB-4)
- Construct new 9,500 Gross SF FA Auditorium addition (500 seats) @ southwest side of FA (NB-5)



St. Petersburg College



TARPON SPRINGS CAMPUS ILLUSTRATIVE MASTER PLAN

VEHICULAR ACCESS

This document and any reproduction are the property and copyright of EMO/ARCHITECTS, INC. and may not be reproduced, published or used in any manner without the written permission of the Architect.

Copyright © 2012 EMO
EMO Project Number E141.10
23 May 2012

Traffic and Parking

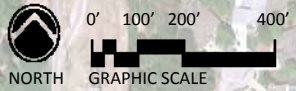
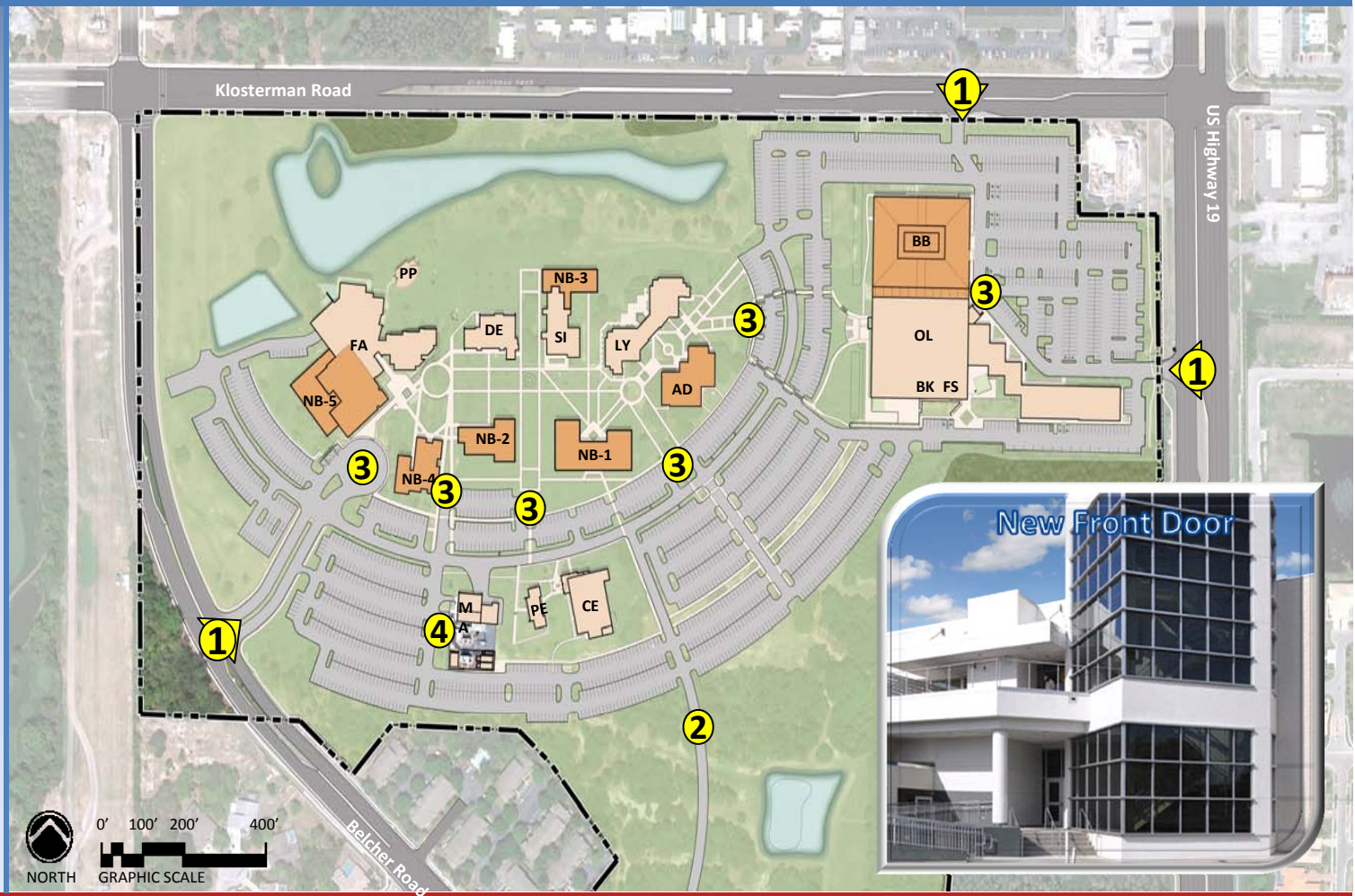
The primary access and thoroughfare for the campus was initially designed with the major campus entry from Belcher Road and the secondary entry from Klosterman Road. Since the acquisition of the Olympia property, the entry from US Highway 19 will be converted into the new front door.

The shape of the campus is defined by the arc of the parking and street structure on the south and the arc of the water feature on the north. With the exception of the education building, the sports/recreation building and the central utility plant, all of the campus buildings were sited north of the vehicular circulation arc before the acquisition of the Olympia property. This addition to the campus changes the center of gravity of the campus further east in terms of facility area and the number of students served.

This arrangement creates an inner pedestrian area with the vehicular circulation as a boundary and two satellite sites consisting of the two aforementioned areas separated by the parking lots and street.

Graphic Legend

- ① Primary Access
- ② Secondary Access
- ③ Drop off Location
- ④ Service / Receiving Locations



St. Petersburg College

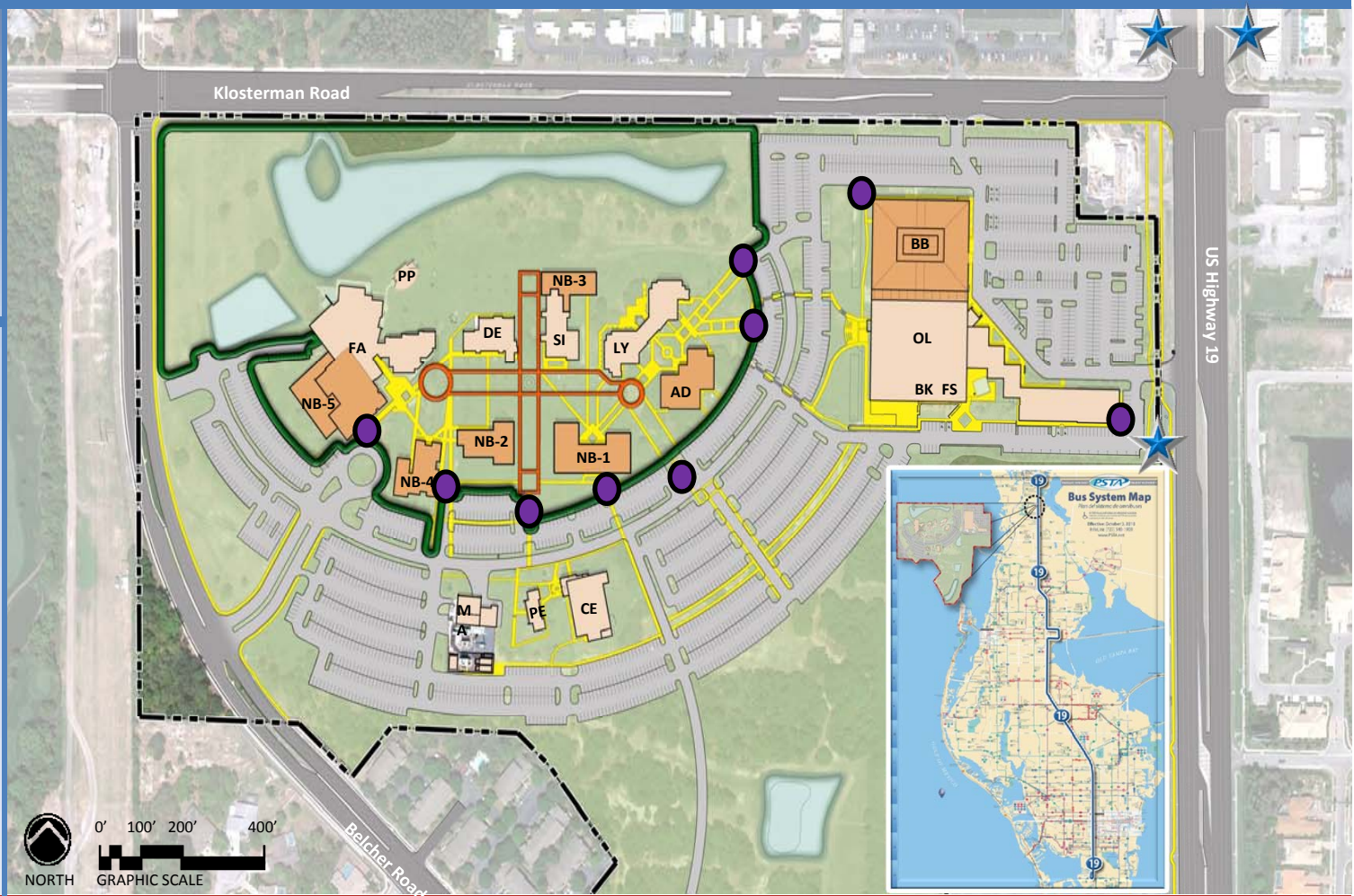


TARPON SPRINGS CAMPUS ILLUSTRATIVE MASTER PLAN






PEDESTRIAN ACCESS

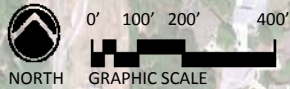
This document and any reproduction are the property and copyright of EMO/ARCHITECTS, INC. and may not be reproduced, published or used in any manner without the written permission of the Architect.

Copyright © 2012 EMO
EMO Project Number: E141.10
23 May 2012



Graphic Legend

-  Pedestrian Zone
-  Academic Quadrangle
-  Pedestrian Circulation
-  PSTA Bus Stop Route 19
-  Pedestrian Gateways



St. Petersburg College



TARPON SPRINGS CAMPUS ILLUSTRATIVE MASTER PLAN

MASTER PLAN SUMMARY

PHASE 01

- **PB** – Portables, Zeta portable (**ZE**), Eta portable (**ET**), Lambda portable (**LA**), Omicron portable (**OM**), Tau portable (**TA**), Rho portable (**RH**), Iota portable (**IO**), Kappa portable (**KA**) - demolish
- **NB-1** - Construct new Library/Learning Commons/Classroom
- **FA** - Remodel old Library at Leepa Rattner Museum of Art, relocate Humanities, Fine Arts, MIRA to FA

PHASE 02

- **NU** – NU Tech building - demolish
- **NB-2** - Construct new Math/Science building at GA, EP Site
- **GA** - Gamma building - demolish
- **EP** - Epsilon building – demolish
- **NB-3** - Construct new Science Lab addition adjacent to Sigma building (**SI**)

PHASE 03

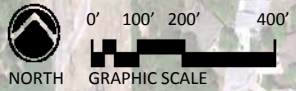
- Redevelop parking at northeast corner of campus, add additional drive at south of campus and appropriate parking lot spaces throughout campus
- **OL** - **BB** to become new Campus Front relocate (**AD**), College of Business, Emergency Medical Services, and vocational ed. program to first floor
- **AD** - Remodel and relocate Student Life Leadership and Computer Support
- **AG** - Agora building - demolish
- **CS** - Student Life Leadership Computer Support building - demolish

PHASE 04

- **BE** - Beta building - demolish
- **AL** - Alpha building - demolish
- **TH** - Theta building - demolish

PHASE 05

- **NB-4** - Construct new classroom building at AG/CS Site
- **NB-5** - Construct new FA Auditorium addition (500 seats)



This document and any reproduction are the property and copyright of EMO/ARCHITECTS, INC. and may not be reproduced, published or used in any manner without the written permission of the Architect.
 Copyright © 2012 EMO
 EMO Project Number: E141.10
 23 May 2012

St. Petersburg College



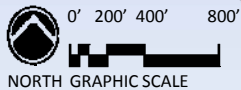
TARPON SPRINGS CAMPUS ILLUSTRATIVE MASTER PLAN

MASTER PLANNING STRATEGY

Master Planning Strategy

- ❑ Identify developable areas which allow for incremental development of future buildings within the context of the academic quadrangle in order to enhance the quality of pedestrian circulation and create opportunities for informal student learning activities.
- ❑ Eliminate portable classrooms to create the new Library/Learning Commons/Classroom building.
- ❑ The campus should limit or avoid small buildings. New building should be 3 stories in height to decrease new construction footprints, and help avoid land impact for future expansion.
- ❑ Convert the existing Olympia Building into the “New Front Door” to serve as an iconic place for meeting and gathering.
- ❑ Create a vibrant garden landscape and a more traditional collegiate environment. The development of well defined “greenways”, and “open spaces” on campus encourages student interaction as well as providing structure and beauty to the campus.
- ❑ Redevelop parking at the northeast corner of campus away from the campus core to maintain a defined quad and pedestrian zone. The goal of future expansion is to increase the campus density while maintaining an area for student gathering, convenient access between all facilities and minimum travel distance from the parking areas.
- ❑ Create a unique academic campus with a distinctive sense of place in order to attract and retain top students and faculty while serving the greater community.

Key Campus Map



This document and any reproduction are the property and copyright of EMO/ARCHITECTS, INC. and may not be reproduced, published or used in any manner without the written permission of the Architect.
 Copyright © 2012 EMO
 EMO Project Number: E141.10
 23 May 2012

St. Petersburg College



TARPON SPRINGS CAMPUS ILLUSTRATIVE MASTER PLAN

NEW BUILDING SUMMARY

Total existing square footage of campus (see slide 7 for breakdown) =	317,624
Total square footage to be demolished =	31,021
Existing square footage remaining =	286,603
New buildings to be constructed in the future	
Square Footage	
NB1 New Library / Learning Commons / Classroom Building-1	54,500
NB2 New Math / Science Building-2	28,510
NB3 New Science Lab Addition to Building SI	6,750
NB4 New Classroom Building-4	29,463
NB5 Auditorium addition (500 seats)	9,500
New building SF subtotal =	128,723
New grand total =	415,326
Total SF gained based on build-out of campus =	97,702
(415,326 sf – 317,624 sf = 97,702 sf)	

Key Campus Map



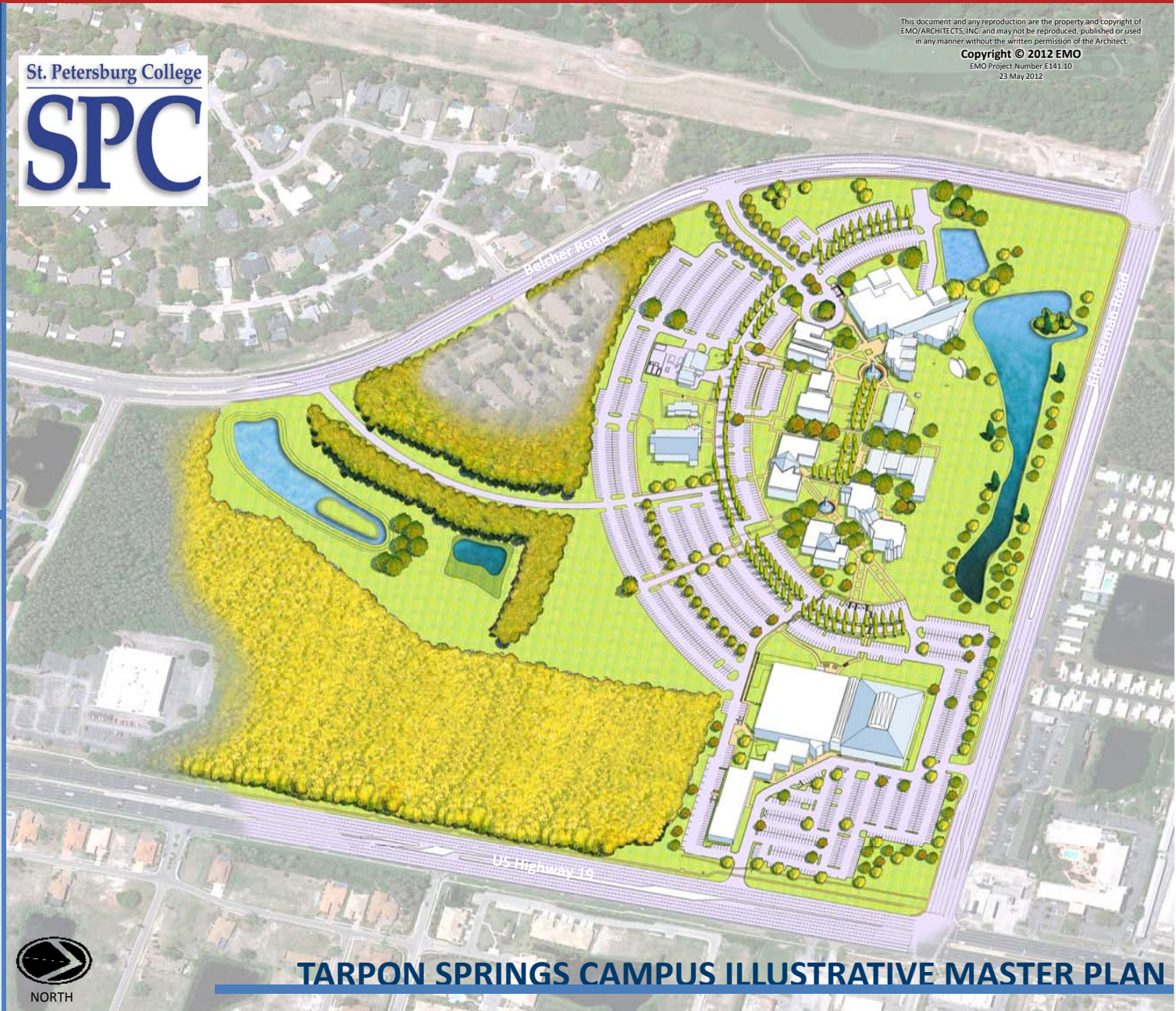
0' 200' 400' 800'
 NORTH GRAPHIC SCALE



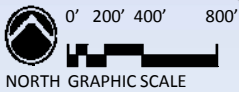
This document and any reproduction are the property and copyright of EMO ARCHITECTS, INC. and may not be reproduced, published or used in any manner without the written permission of the Architect.

Copyright © 2012 EMO
EMO Project Number E141.10
23 May 2012

AERIAL VIEW 1



Key Campus Map



TARPON SPRINGS CAMPUS ILLUSTRATIVE MASTER PLAN



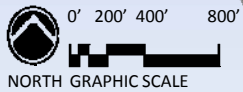
This document and any reproduction are the property and copyright of EMO ARCHITECTS, INC. and may not be reproduced, published or used in any manner without the written permission of the Architect.

Copyright © 2012 EMO
EMO Project Number E141.10
23 May 2012

AERIAL VIEW 2



Key Campus Map



TARPON SPRINGS CAMPUS ILLUSTRATIVE MASTER PLAN

This document and any reproduction are the property and copyright of EMO ARCHITECTS, INC. and may not be reproduced, published or used in any manner without the written permission of the Architect.

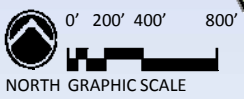
Copyright © 2012 EMO
EMO Project Number E141.10
23 May 2012



AERIAL VIEW 3



Key Campus Map



TARPON SPRINGS CAMPUS ILLUSTRATIVE MASTER PLAN