



CANERDAY, BELFSKY & ARROYO
ARCHITECTS INC.



April 25th, 2012

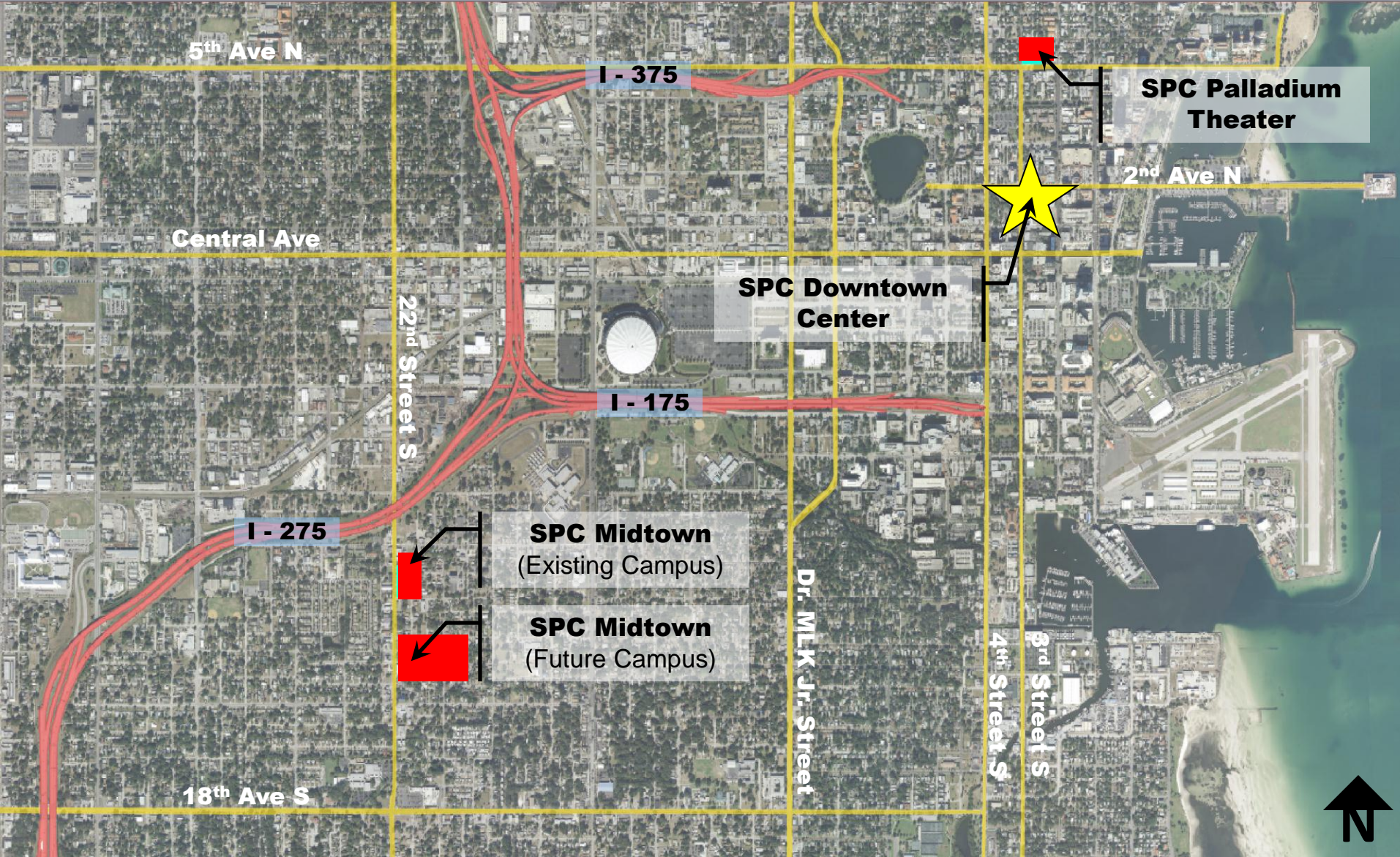
Collegewide Masterplanning **Downtown Center**



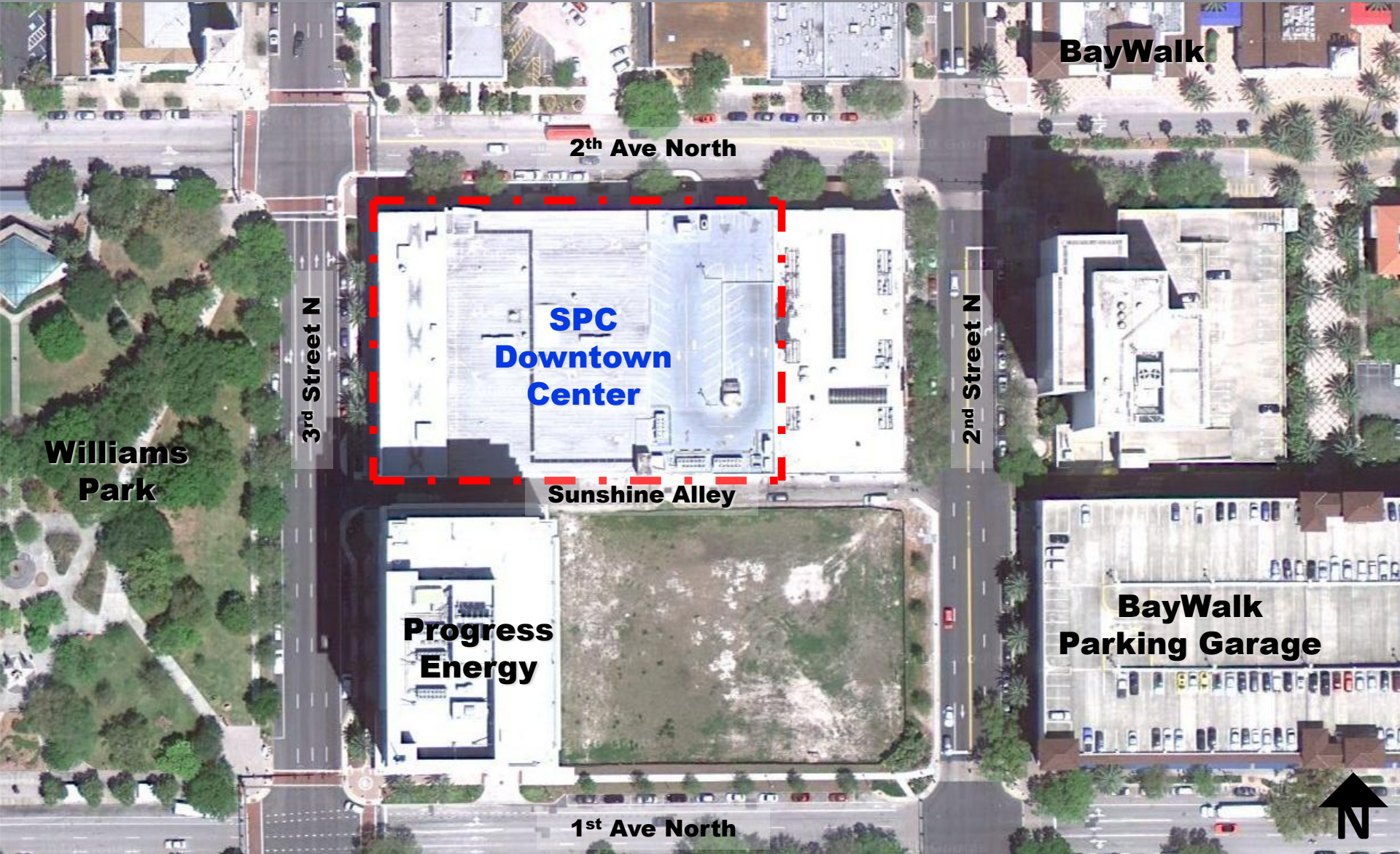


- + Campus Location
- + Front Door
- + Pedestrian & Vehicular Access
- + Site Analysis
- + Master Plan
- + Material Palate
- + Student Gathering Spaces
- + Signage

Site Location



Campus Location



Collegewide Masterplanning **Downtown Center**

Front Door

Corner of 3rd Street North
& 2nd Avenue North



Front Door

Public / Arts Center Entrance
3rd Street North



Front Door

**College Entrance
2nd Avenue North**

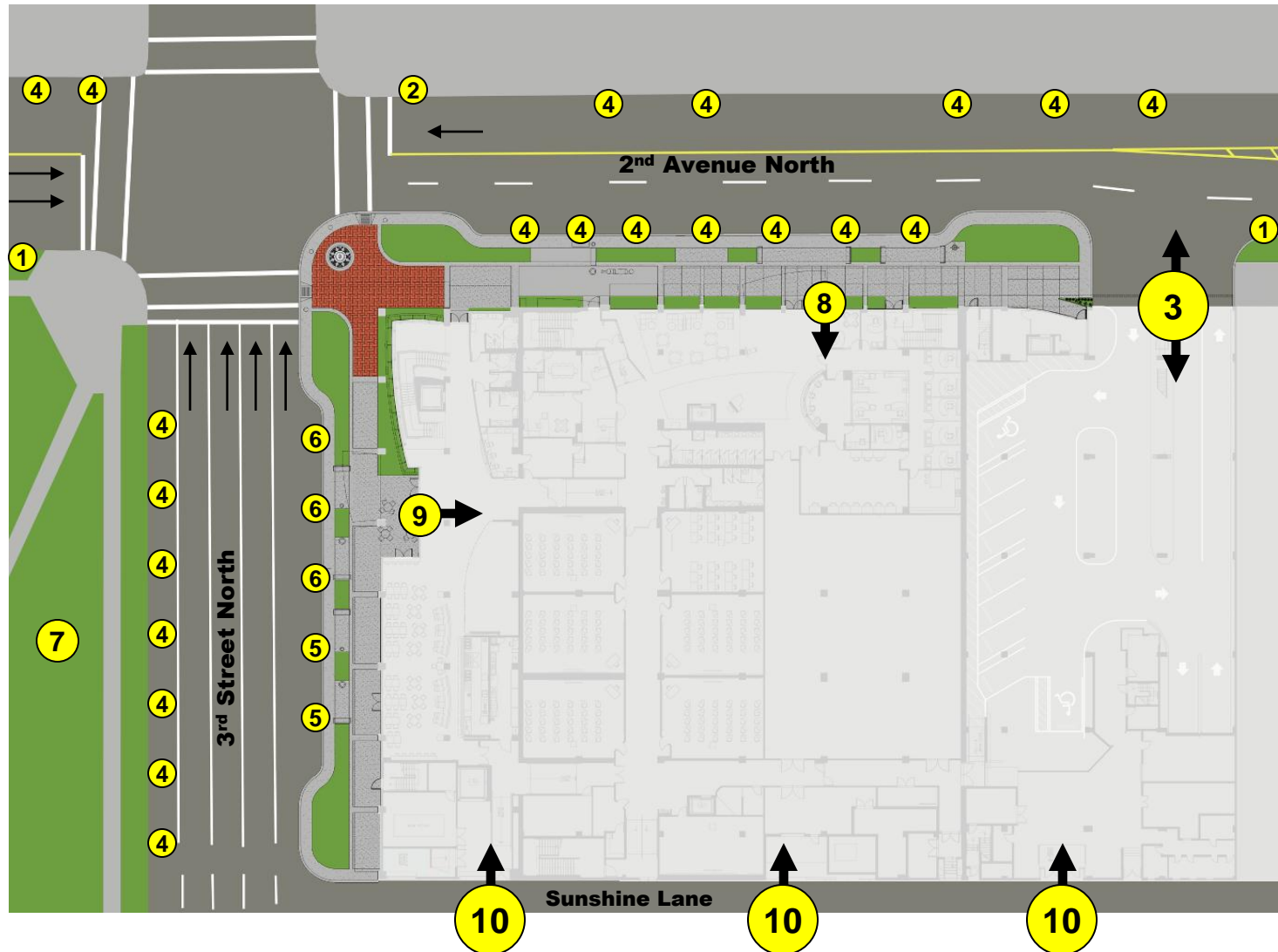


Front Door

Parking Garage Entrance
2nd Avenue North



Pedestrian and Vehicular Access



1. Bus Stops
2. Downtown Looper Stops
3. Parking Garage Access
 + 143 Standard Spaces
 + 6 H/C Spaces
 + Ground Level has area for motorcycles/bicycles
4. Two Hour Parking (Metered)
5. 45 Minute Parking
6. 15 Minute Parking
7. Williams Park
8. SPC Entrance
9. Public/Arts Entrance
10. Delivery Access



Site Analysis

First Floor

Existing Uses by Color



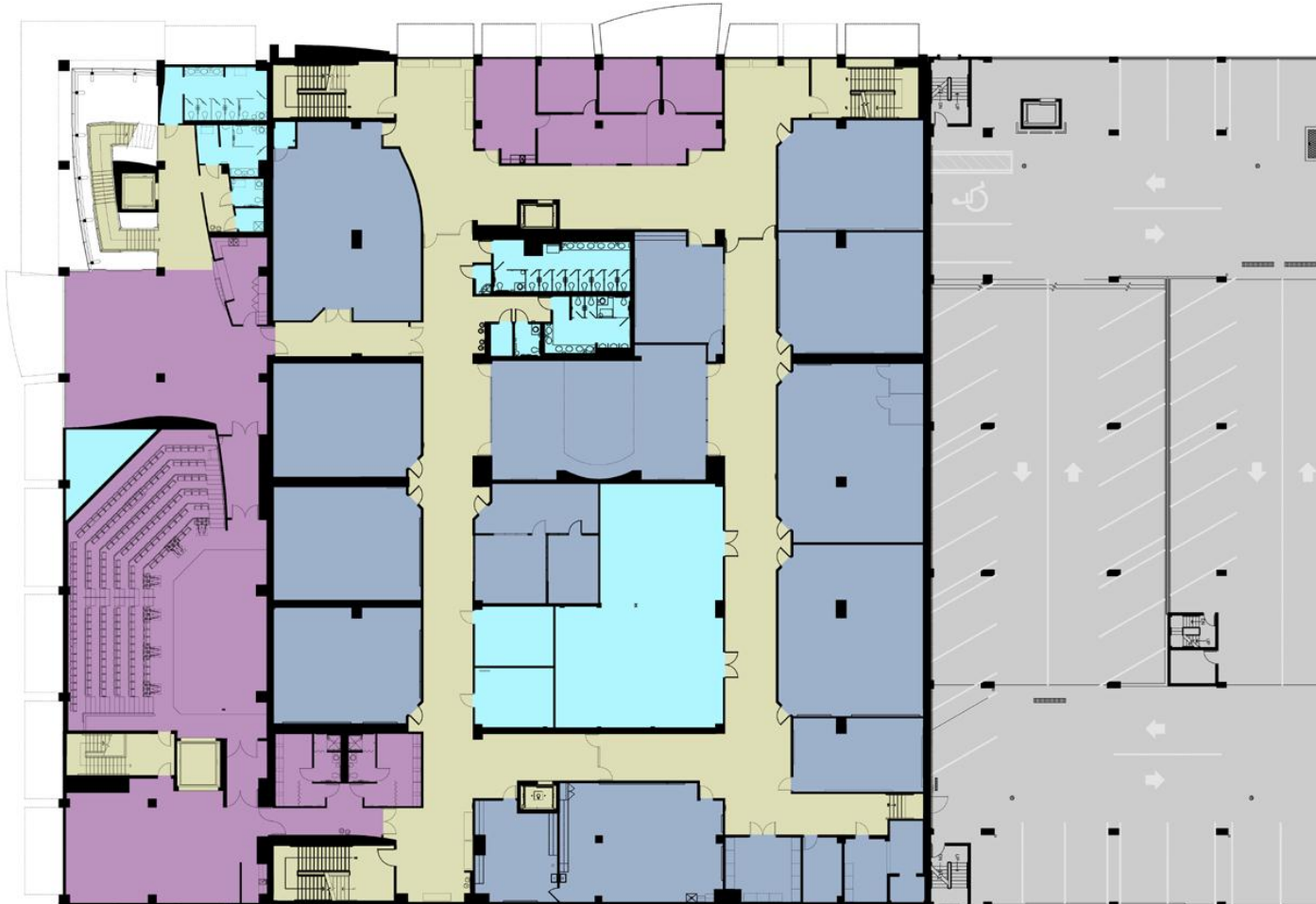
- SPC**
12,811 sf
- Joint Use/Lease**
1,390 sf
- Shell Space**
6,143 sf
- Service**
4,462 sf
- Circulation**
13,758 sf



Site Analysis

Second Floor

Existing Uses by Color



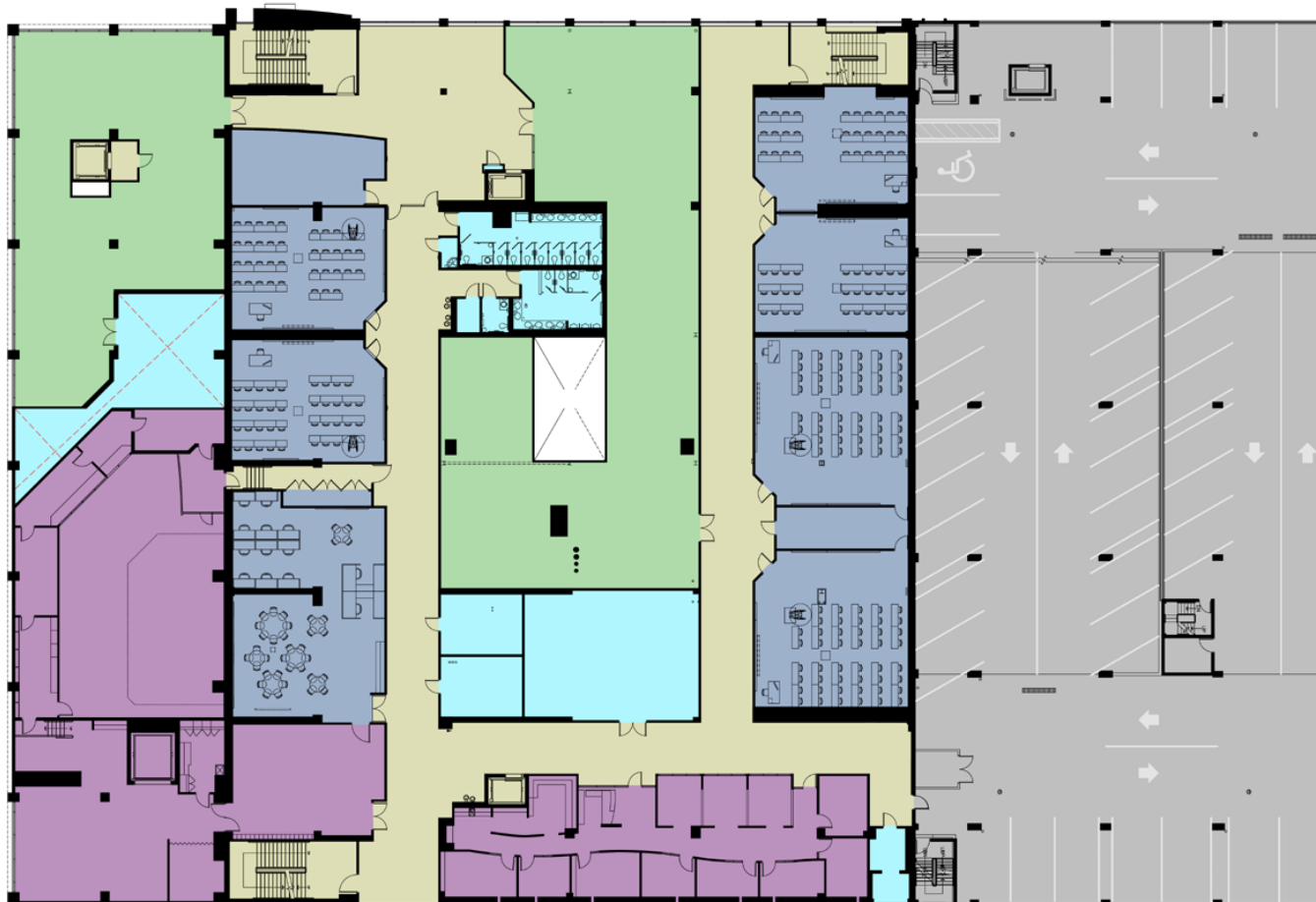
- SPC**
15,175 sf
- Joint Use/Lease**
8,962 sf
- Shell Space**
0 sf
- Service**
4,430 sf
- Circulation**
10,783 sf








Site Analysis

Third Floor

Existing Uses by Color



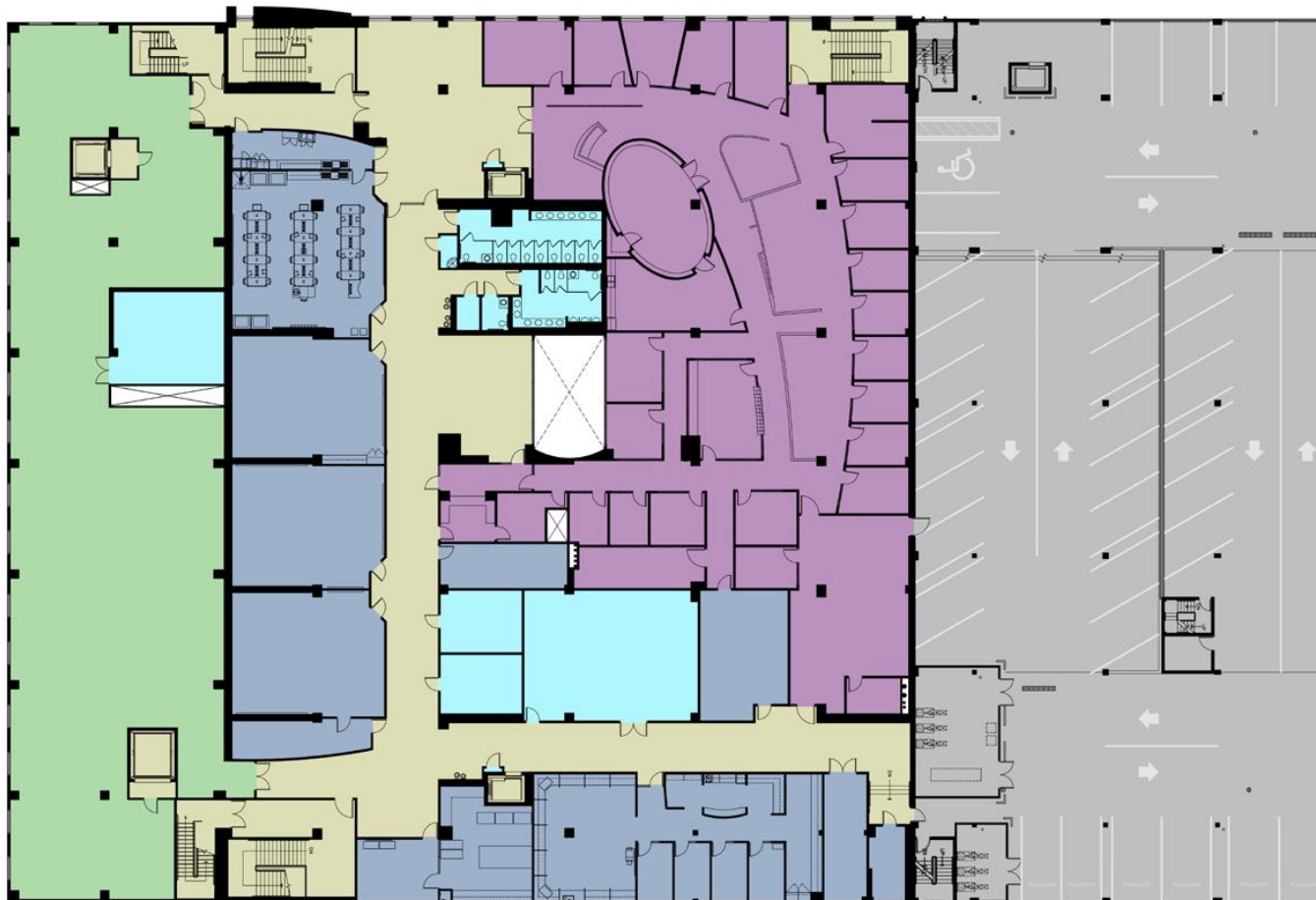
-  **SPC**
9,362 sf
-  **Joint Use/Lease**
8,743 sf
-  **Shell Space**
8,458 sf
-  **Service**
3,876 sf
-  **Circulation**
9,184 sf








Site Analysis

Fourth Floor

Existing Uses by Color



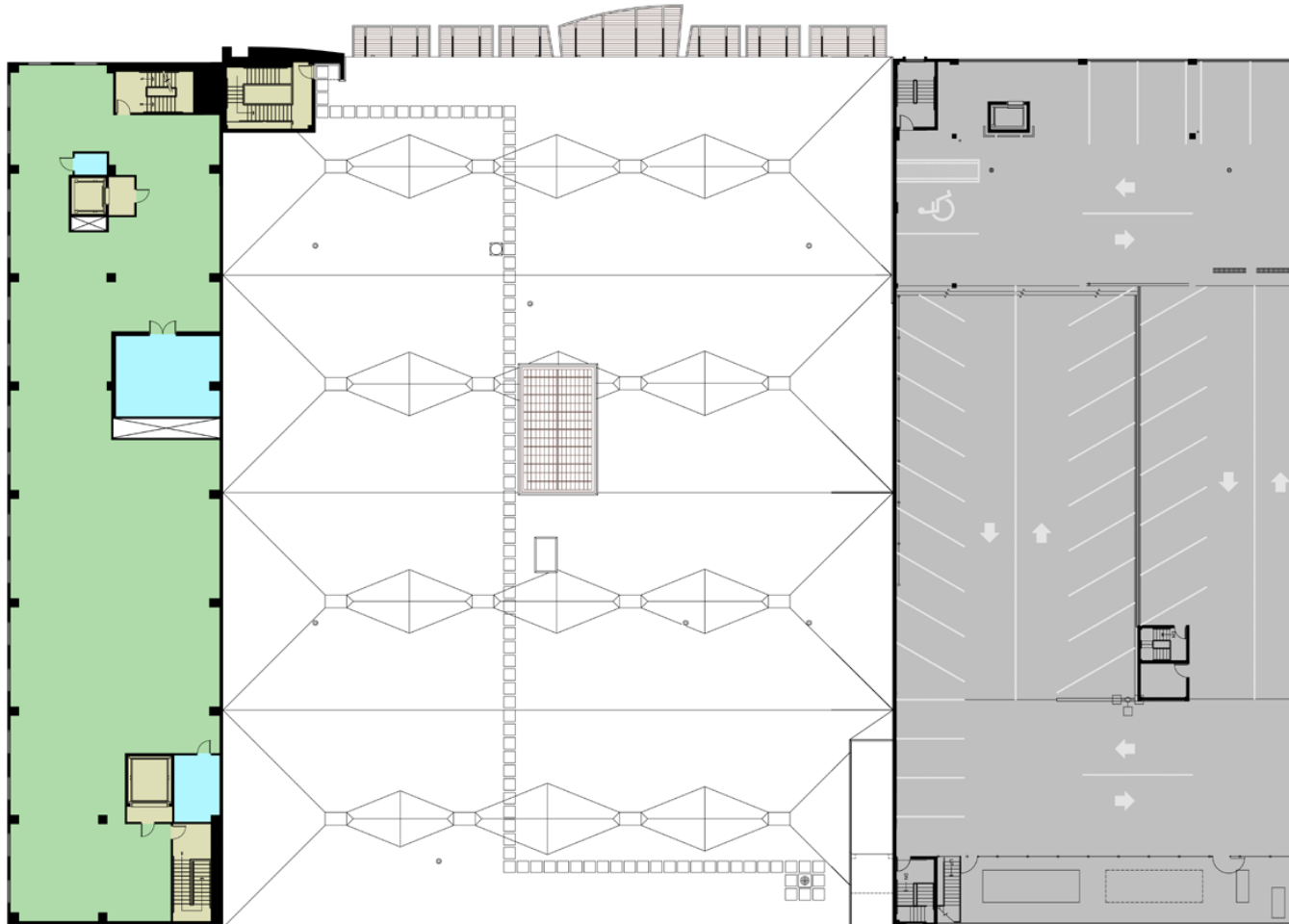
-  **SPC**
8,881 sf
-  **Joint Use/Lease**
11,000 sf
-  **Shell Space**
8,232 sf
-  **Service**
3,354 sf
-  **Circulation**
8,324 sf




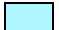



Site Analysis

Fifth Floor

Existing Uses by Color



-  **SPC**
0 sf
-  **Joint Use/Lease**
0 sf
-  **Shell Space**
7,557 sf
-  **Service**
638 sf
-  **Circulation**
594 sf



Site Analysis

Square Footage Summary

	SPC	Joint Use	Shell Space	Service	Circulation	Total
First Floor Food Service Bookstore Box Office	12,811 sf	698 sf 692 sf 700 sf	6,143 sf	4,462 sf	13,758 sf	39,264 sf
Second Floor American Stage DTN Part/ Pier Aquar.	15,175 sf	7,532 sf 1,430 sf	0 sf	4,430 sf	10,783 sf	39,350 sf
Third Floor American Stage	9,362 sf	8,743 sf	8,458 sf	3,876 sf	9,184 sf	39,623 sf
Fourth Floor Florida Orchestra	8,881 sf	11,000 sf	8,232 sf	3,354 sf	8,324 sf	39,791 sf
Fifth Floor	0 sf	0 sf	7,557 sf	638 sf	594 sf	8,789 sf
Total	46,229sf	30,795sf	30,390sf	16,760sf	42,643sf	166,817sf

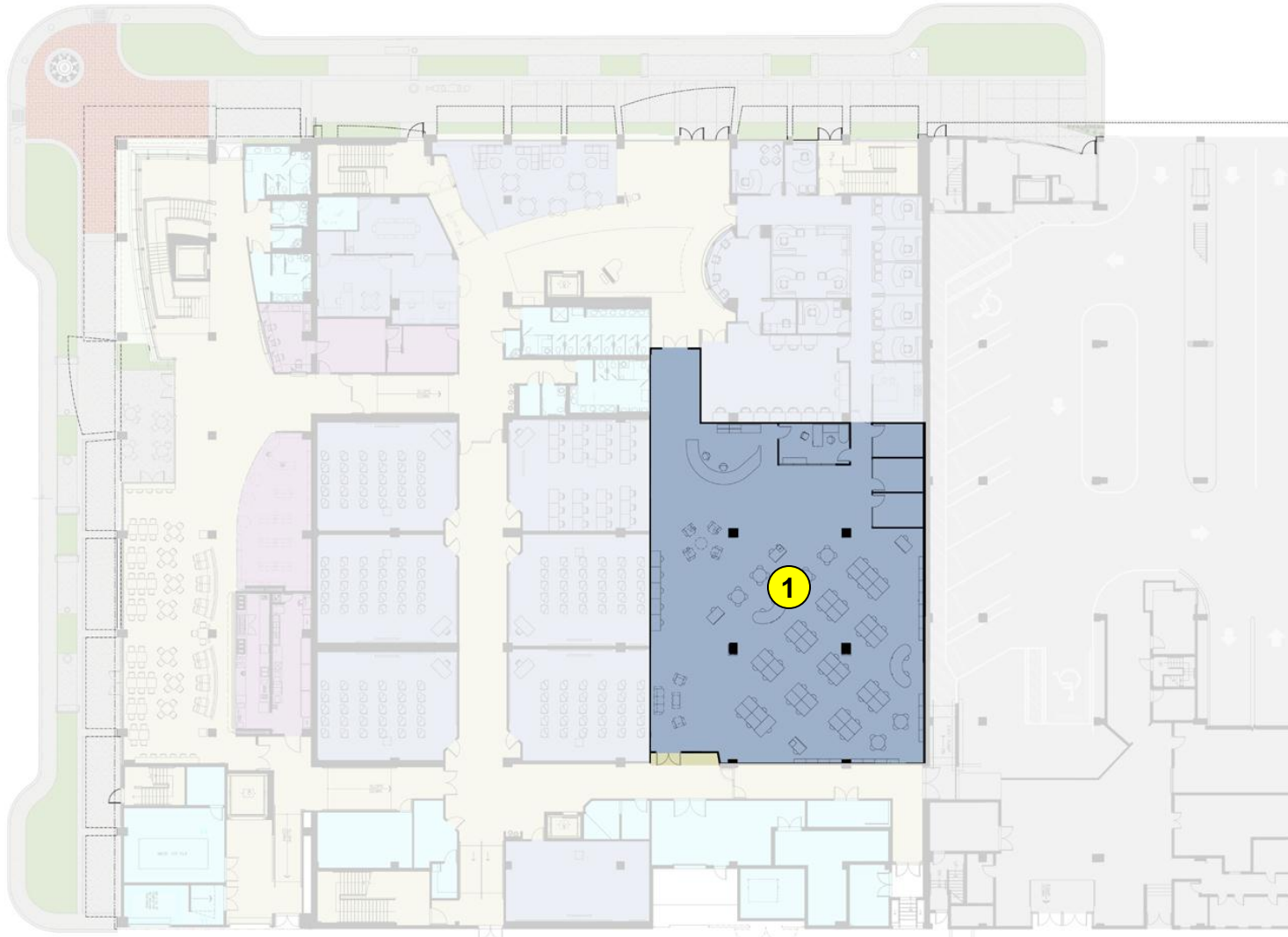
Master Plan

First Floor

Future Uses by Color

 **SPC**
6,143 sf

- 1. Proposed Student Learning Support Commons to be developed in the old museum space.**



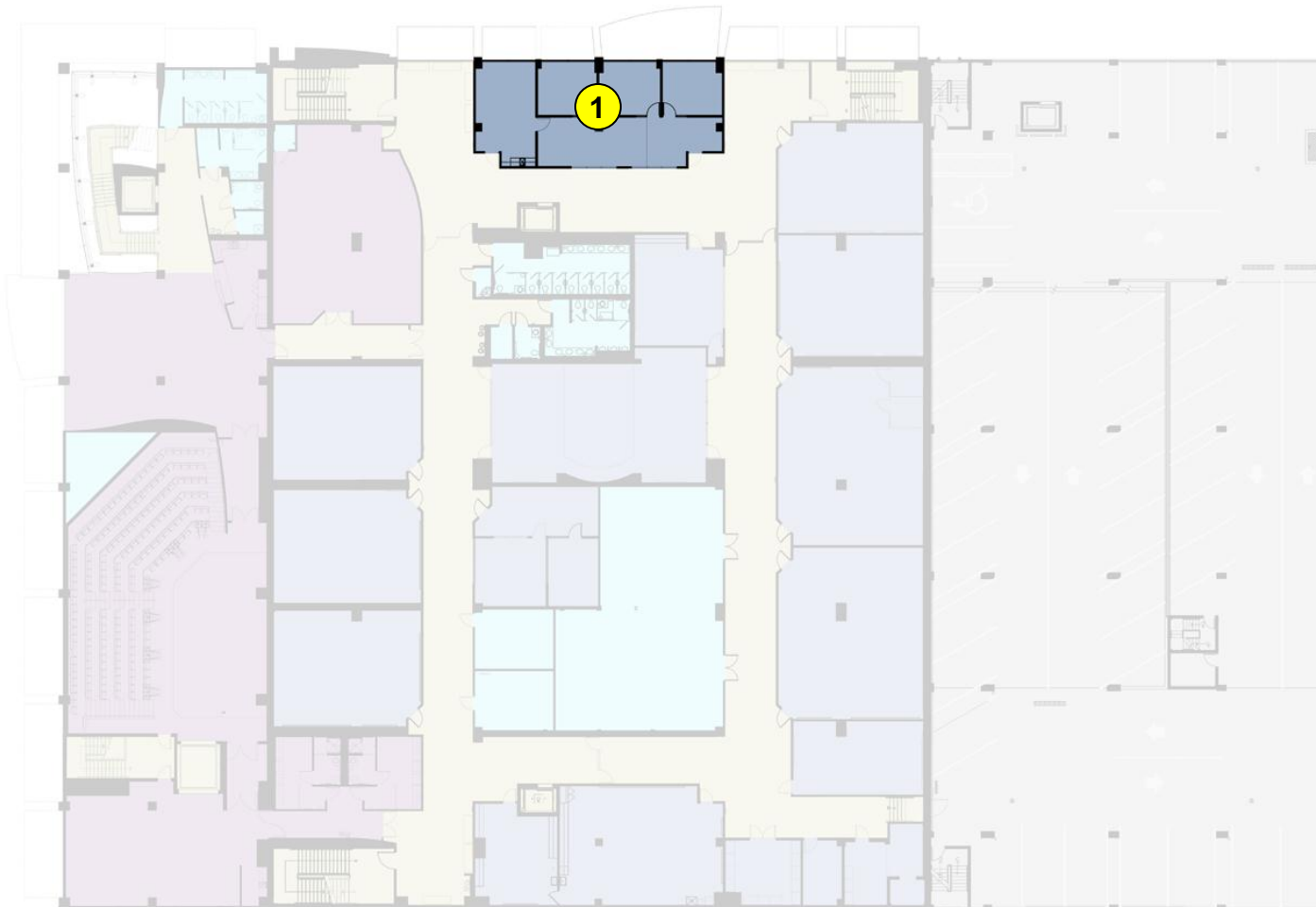
Master Plan

Second Floor

Future Uses by Color

 **SPC**
1,430 sf

1. Leased Space will be changed to Faculty office space.




Master Plan

Third Floor

Future Uses by Color

 **SPC**
7,643 sf

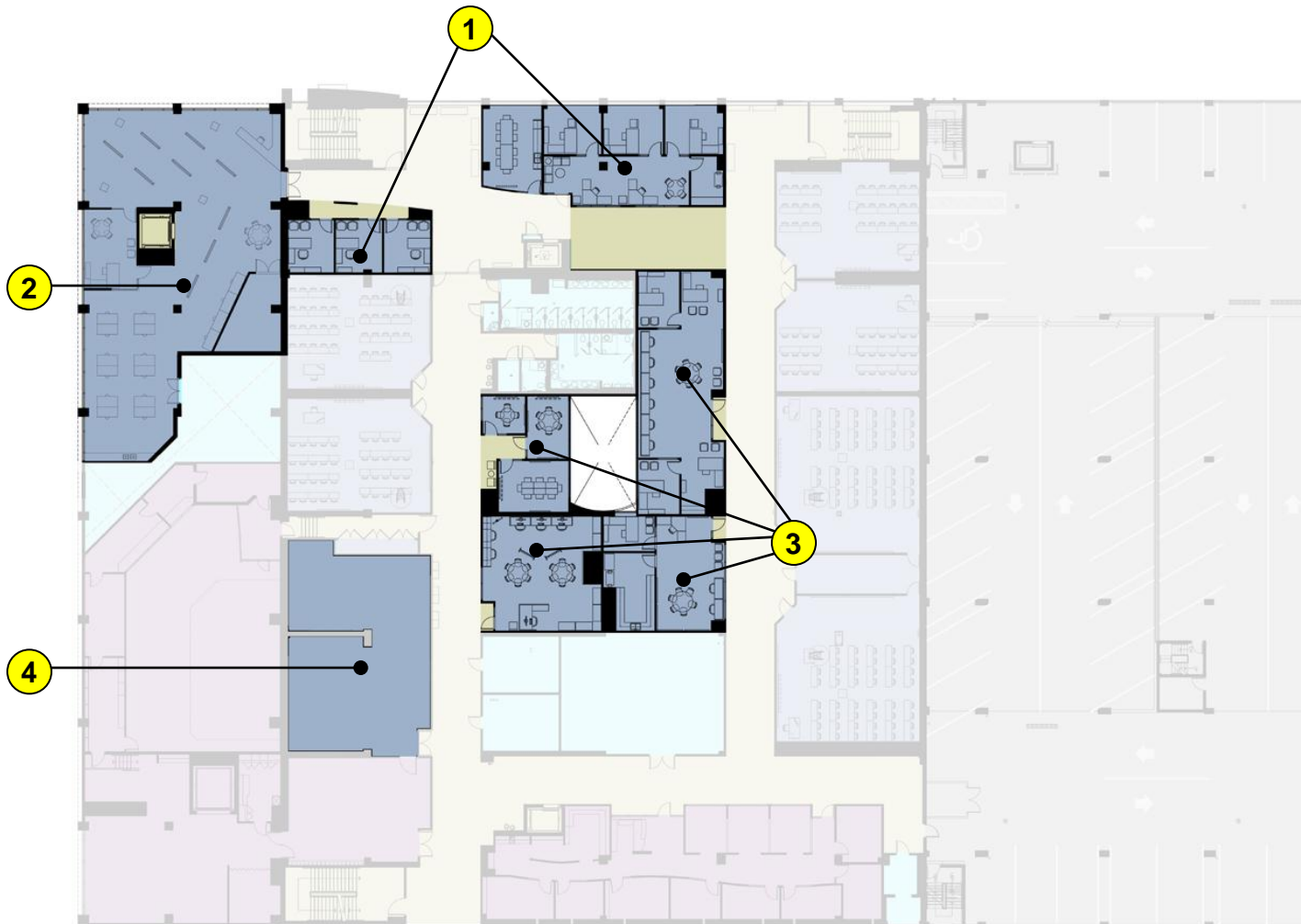
 **Circulation**
815 sf

1. Faculty Offices

2. Dance Classroom

**3. Student Support
Spaces**

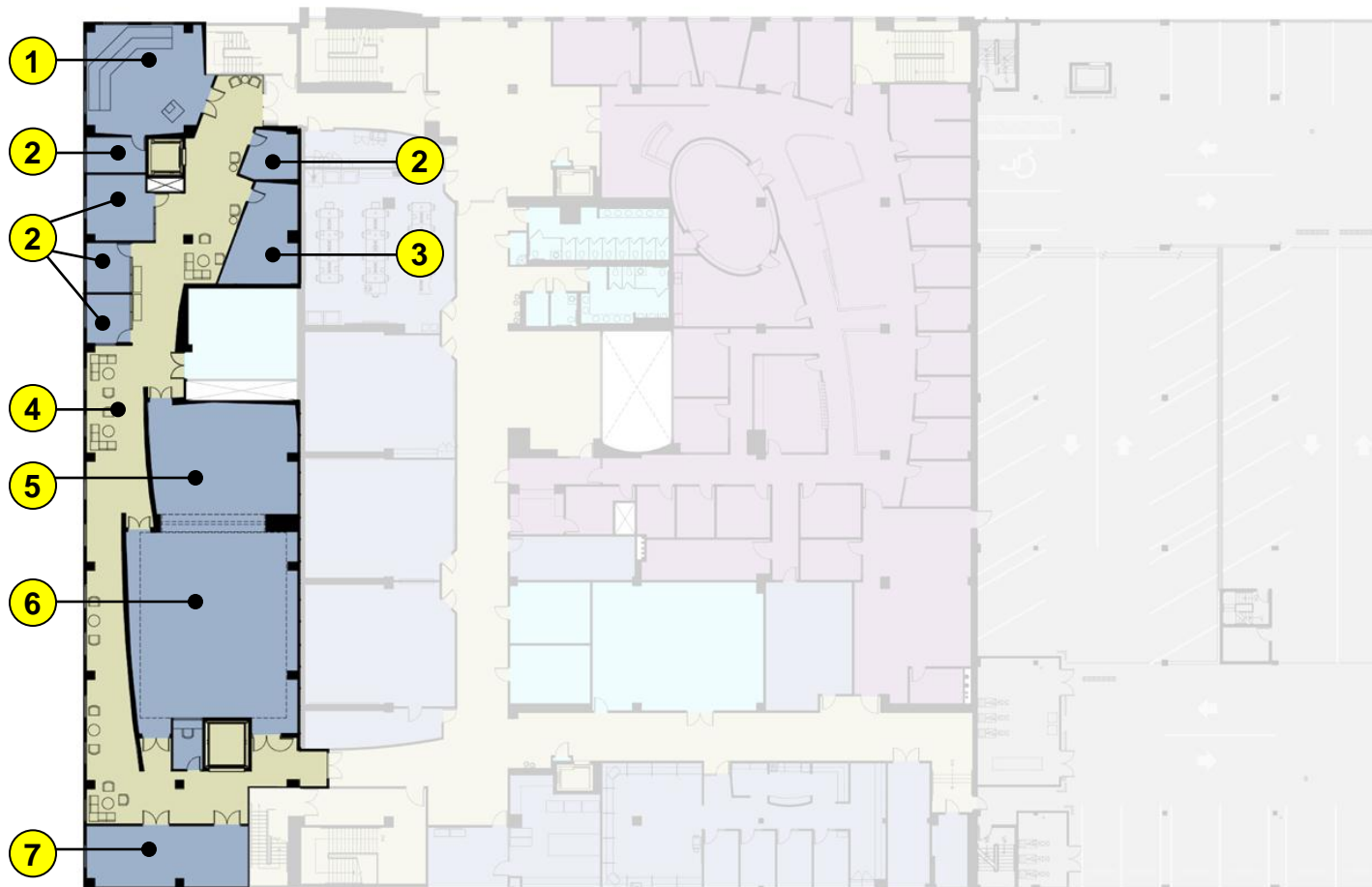
**4. Visual Arts Classroom
(25ss) To Take Over
Former Learning
Support Center**



Master Plan

Fourth Floor

Future Uses by Color



SPC
5,462 sf

Circulation
2,770 sf

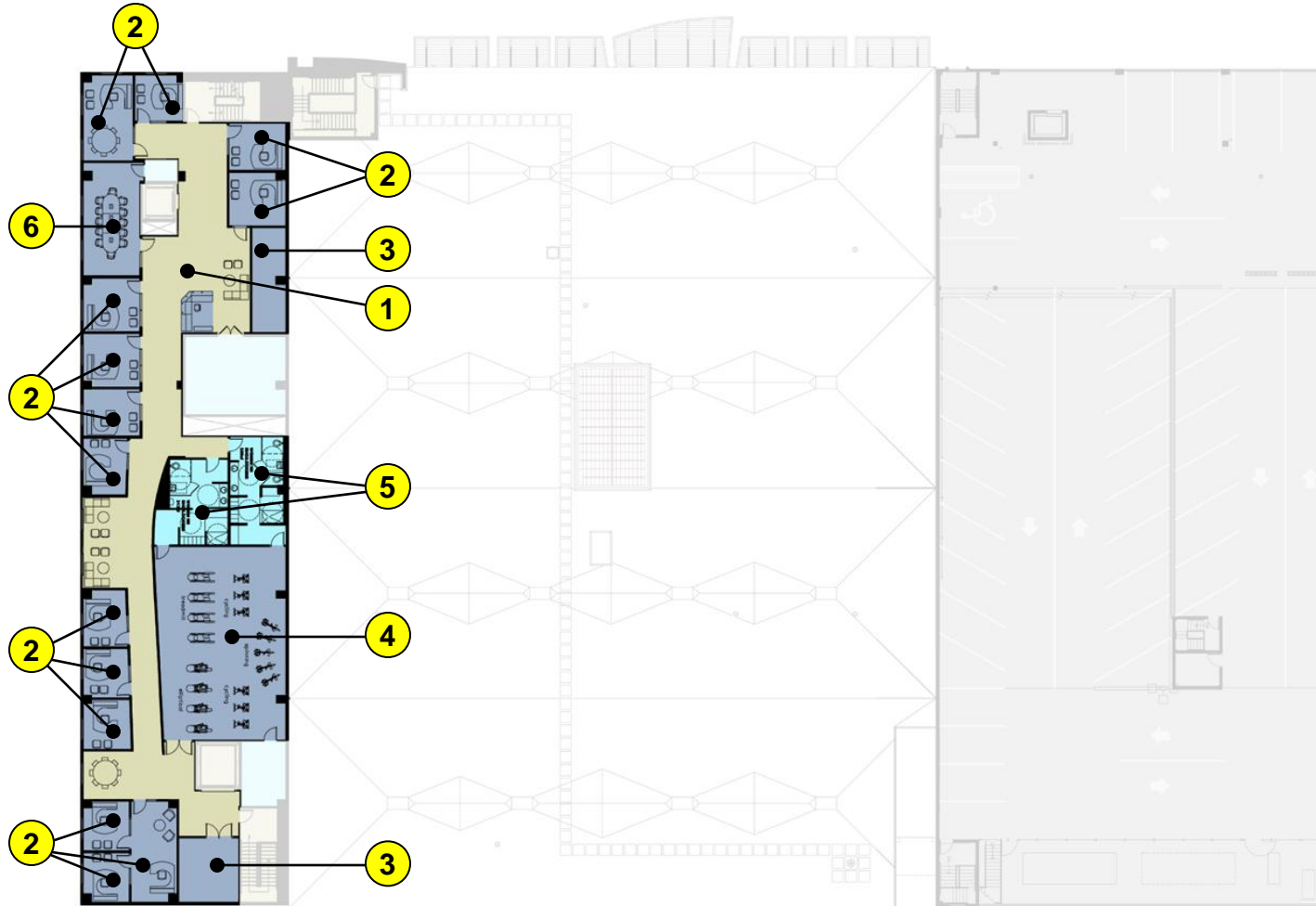
1. Vocal Room
2. Musical Instrument & Vocal Practice Rooms
3. Group Practice Room
4. Black Box Pre-Function Area
5. Instrumental Music and Black Box Preparation Room
6. Black Box Classroom Performance Space
7. Support Space



Master Plan

Fifth Floor

Future Uses by Color



SPC
4,485 sf

Circulation
2,439 sf

Service
633 sf

1. Reception Area
2. Faculty Offices
3. Support Space
4. Fitness Room
5. Restrooms/Lockers
6. Meeting Space



Master Plan

Square Footage Summary

	SPC	Joint Use	Shell Space	Service	Circulation	Total
Existing	46,229sf	30,795sf	30,390sf	16,760sf	42,643sf	166,817sf

Work Accomplished through the Masterplan

	SPC	Joint Use	Shell Space	Service	Circulation	Total
First Floor	6,143 sf					6,143 sf
Second Floor	1,430 sf	-1,430 *				0 sf
Third Floor	7,643 sf				815 sf	8,458 sf
Fourth Floor	5,462 sf				2,770sf	8,232 sf
Fifth Floor	4,485 sf			633 sf	2,439 sf	7,557sf
Total	25,163sf	- 1,430sf	0 sf	633sf	6,024sf	30,390 sf

* Joint-use space will change over to College Space

	SPC	Joint Use	Shell Space	Service	Circulation	Total
Future	71,392sf	29,365sf	0 sf	17,393sf	48,667sf	166,817sf

Material Palette

Exterior



Painted Stucco



Aluminum Canopy System



Glazed Aluminum Curtain Wall



Accent Lighting

Material Palette

Interior – Arts Spaces



Vinyl Flooring with Custom Color Pattern



Accent Lighting Shelves - Carpet Tile – Porcelain Tile



**Stainless Steel Guardrail w/ Hardwood Handrail
Eco-Resin Signage**

Material Palette

Interior – College Spaces



Resin Countertops, Laminate Panels



Painted Drywall Accent Wall



Painted Drywall Accent Wall



Carpet Tiles, Acoustical Ceiling Tiles

Student Gathering Spaces



Student Lounge – Second Floor



Student/Staff Lounge Area – Fourth Floor



**New Food Service/Dining Area
Under Construction
Opening For Fall 2012**



**New Student Waiting Area
/Lounge First Floor
Under Construction
Opening For Fall 2012**



Exterior Under Canopy Signage



Directional Wall Sign



Interior - Ceiling Mounted - Directional Sign



Classroom Wall Sign